



Genetic contributors to risk of schizophrenia in the presence of a 22q11.2 deletion

Isabelle Cleynen¹ et al.

Received: 5 June 2019 / Revised: 1 November 2019 / Accepted: 16 January 2020
© The Author(s), under exclusive licence to Springer Nature Limited 2020

Abstract

Schizophrenia occurs in about one in four individuals with 22q11.2 deletion syndrome (22q11.2DS). The aim of this International Brain and Behavior 22q11.2DS Consortium (IBBC) study was to identify genetic factors that contribute to schizophrenia, in addition to the ~20-fold increased risk conveyed by the 22q11.2 deletion. Using whole-genome sequencing data from 519 unrelated individuals with 22q11.2DS, we conducted genome-wide comparisons of common and rare variants between those with schizophrenia and those with no psychotic disorder at age ≥ 25 years. Available microarray data enabled direct comparison of polygenic risk for schizophrenia between 22q11.2DS and independent population samples with no 22q11.2 deletion, with and without schizophrenia (total $n = 35,182$). Polygenic risk for schizophrenia within 22q11.2DS was significantly greater for those with schizophrenia ($p_{\text{adj}} = 6.73 \times 10^{-6}$). Novel reciprocal case-control comparisons between the 22q11.2DS and population-based cohorts showed that polygenic risk score was significantly greater in individuals with psychotic illness, regardless of the presence of the 22q11.2 deletion. Within the 22q11.2DS cohort, results of gene-set analyses showed some support for rare variants affecting synaptic genes. No common or rare variants within the 22q11.2 deletion region were significantly associated with schizophrenia. These findings suggest that in addition to the deletion conferring a greatly increased risk to schizophrenia, the risk is higher when the 22q11.2 deletion and common polygenic risk factors that contribute to schizophrenia in the general population are both present.

These authors contributed equally: Isabelle Cleynen, Worrawat Engchuan, Matthew S. Hestand, Tracy Heung, Aaron M. Holleman, H. Richard Johnston, Thomas Monfeuga

These authors jointly supervised this work: Michael P. Epstein, Nigel M. Williams, Anne S. Bassett

Supplementary information The online version of this article (<https://doi.org/10.1038/s41380-020-0654-3>) contains supplementary material, which is available to authorized users.

✉ Michael P. Epstein
mpepste@emory.edu

✉ Nigel M. Williams
williamsnm@cardiff.ac.uk

✉ Anne S. Bassett
anne.bassett@utoronto.ca

Extended author information available on the last page of the article

Introduction

There is accumulated evidence that the recurrent deletion at chromosome 22q11.2 that is associated with 22q11.2 deletion syndrome (22q11.2DS) represents a clinically relevant cause of schizophrenia, and is one of the strongest known risk factors for schizophrenia [1]. Schizophrenia occurs in about one in four individuals with 22q11.2DS, representing a more than 20-fold increase over the general population risk of 1% [1, 2]. Identifying additional genetic modifiers of expressing schizophrenia in addition to the deletion is of scientific and clinical interest [1, 3, 4].

Discovering such additional genetic factors is a primary goal of the International 22q11.2DS Brain and Behavior Consortium (IBBC) [3]. We recently reported evidence from genome-wide microarray data that other rare copy number variations (CNVs) outside of the 22q11.2 deletion region increase risk to schizophrenia in 22q11.2DS [5]. A key question is whether other genetic contributions to schizophrenia, known to exert risk in the general population, are modifying risk of schizophrenia within the 22q11.2DS subgroup.

Schizophrenia is polygenic, with risk variants spanning the full spectrum of population frequencies. Common alleles identified from genome-wide association studies (GWAS) each contribute only a small effect to disease risk, but their aggregate effect can confer a far greater risk, and this is quantifiable as a polygenic risk score (PRS). Subsequent analysis of aggregated genes can also be a means to further highlight relevant associations with disease [6]. Studies of rare protein-coding variants implicate functional gene sets relevant to neuronal functions and synaptic components including the activity-regulated cytoskeleton-associated protein (ARC) complex, amongst others [7–12].

The current study used whole-genome sequencing (WGS) and microarray data from the IBBC [3] to investigate the contribution of common (single-nucleotide polymorphisms, SNPs) and rare genetic variants (comprising mostly single nucleotide variants (SNVs) in protein-coding regions of genes), i.e., sequence variant classes with prior evidence from idiopathic schizophrenia [8, 9, 13]. To improve power, we examined collective signals imparted by the schizophrenia PRS for SNPs [6, 13], and functional gene sets [10] for rare variants. We examined these variant effects both within the 22q11.2 deletion region and genome-wide, comparing individuals with schizophrenia and related major psychotic disorders to those with no psychotic disorder and aged ≥ 25 years, therefore largely past the age at greatest risk for onset of psychotic illness.

Methods

Sample collection and diagnostic classification

The IBBC ascertainment and assessment methods have been previously detailed [3, 5]. Briefly, individuals with a presumed 22q11.2 deletion, who were recruited from 22 international sites in studies approved by local institutional research ethics boards, and for whom existing DNA samples were available, were ascertained for the study. The focus of this study was on unrelated individuals with sufficient data to discern psychotic illness status, who were molecularly confirmed to have a typical hemizygous deletion at 22q11.2, i.e., that spanned the LCR22A-LCR22B region, most commonly extending from LCR22A-LCR22D [1, 3]. As before, individuals were eligible for inclusion in this study if they met DSM diagnostic criteria for a major psychotic disorder (mostly schizophrenia) at any age, or had no history of any psychotic illness when assessed at age ≥ 25 years [5]. Subjects with affective psychosis were excluded. A case consensus procedure assured stringent diagnostic categorization [3]. Additional details are provided in the Supplementary Material.

Whole-genome sequencing (WGS) and processing of DNA samples

Raw Illumina WGS data were mapped with PEMapper [14] to genome build GRCh38/hg38 with a median sequencing depth of 39 \times . The 22q11.2 deletion region was called based on sequencing depth, and variants were called independently with PEXCall [14] for the genome-wide diploid and 22q11.2 haploid regions of the genomes. Routine QC metrics were performed (Table S1) and resulted in a multi-ethnic sample of 519 subjects (259 schizophrenia, 260 no psychotic illness). Using principal component analysis anchored with HapMap reference samples to infer ancestry, we further defined a European subsample of 435 subjects (214 schizophrenia, 221 no psychotic illness) based on subjects whose principal components were within 1 standard deviation of the average PC value for HapMap3 CEU subjects. Additional details on principal components and related QC are provided in the Supplementary Material. These samples were then used for subsequent variant annotation and analyses.

Additional samples and array-based genotyping for polygenic risk assessment

An important aspect of our study was to assess the contribution of polygenic risk to schizophrenia in 22q11.2DS given previous results for schizophrenia in the general population [13].

To achieve this, we used an idiopathic schizophrenia case-control study (CLOZUK/WTCCC) [15] where samples were independent of those from the schizophrenia case-control training dataset used for PRS construction [6]. To allow comparisons between the PRS derived from this dataset and our 22q11.2DS cohort, we used available Affymetrix Genome-Wide Human SNP 6.0 array genotype data [5, 16]. Analyses were restricted to samples of European ancestry and autosomal SNPs. Identity by descent analysis identified three subjects from the 22q11.2DS cohort who were also present in the CLOZUK cohort. After excluding these individuals there were 432 (212 with schizophrenia; 220 nonpsychotic controls) individuals from the 22q11.2DS cohort included for the primary PRS and rare variant analyses.

After alignment (HRCv1.1) [17] and phasing with *Eagle2* [18], genotype imputation of the 22q11.2DS cohort was performed using *Minimac3* [19]. SNPs with common variants (MAF $> 10\%$), low missingness ($< 1\%$), HWE mid $p > 10^{-5}$, and high imputation quality (INFO > 0.9) were retained for PRS analysis. PRS results obtained from imputed SNP data were compared with those obtained from WGS data using a subsample of 365 individuals (171 with schizophrenia; 194 nonpsychotic) that had passed QC for

both methods. Identity by descent analysis ensured correspondence between samples. Only overlapping SNPs that had passed QC in both datasets were kept for this analysis.

To establish a homogenous dataset that would enable a joint analysis of the array-based data from 22q11.2DS and CLOZUK/WTCCC, we initially conducted a QC step that used SNPs that were shared between both datasets (see Supplementary Material for additional details). Following principal component analysis, samples > 6 standard deviations from the mean of the first 20 principal components were excluded to ensure homogeneity of the merged 22q11.2DS and CLOZUK/WTCCC datasets of European ancestry. This QC resulted in a dataset of 322 individuals with 22q11.2DS (147 with schizophrenia; 175 nonpsychotic controls), 10,791 schizophrenia CLOZUK cases and 24,391 WTCCC controls for joint PRS analyses.

Statistical analyses

Single-variant association analysis of common variants

We performed association analyses of WGS data using PLINK 1.9. Variants were defined as common if sample MAF was either $\geq 1\%$ outside the 22q11.2 deletion, or $\geq 2\%$ within the 22q11.2 deletion (given the inherent reduction in the number of haploid variants observed). For analysis within the 22q11.2 deletion region, we only considered hemizygous SNPs, i.e., SNPs located in the deleted region. We therefore performed two sets of analyses: one where all individuals were included and where we considered SNPs located in the region spanning LCR22A-LCR22B, as this region is deleted in all study participants; and one where only individuals with the larger LCR22A-LCR22D deletion were included, using SNPs spanning that entire interval. We used logistic regression to regress disease status on a variant (additive coding), adjusting for sex and top principal components of ancestry. For analyses of the entire sample ($n = 519$: 259 schizophrenia, 260 no psychotic illness), we adjusted for the top five principal components derived from this sample plus HapMap reference samples (Fig. SF1). For analyses of the European subset ($n = 435$: 214 schizophrenia, 221 no psychotic illness), we adjusted for the top three principal components derived from this subset. Given the possibility of unreliable asymptotic results for variants with sample MAF of 1–5%, we further studied these variants using Fisher's Exact Test.

Polygenic risk score (PRS) analyses

We used PRSice software (PRSice-2) [20] to construct PRS in the European subset. We compared WGS and array data to assess robustness of results. Two different datasets were used as the discovery (training) sample. For the 22q11.2DS-

only analyses ($n = 432$) that used WGS data, we used summary results from the second Psychiatric Genomics Consortium mega-analysis of schizophrenia (PGC2 SCZ) [13]. For the analysis of 22q11.2DS ($n = 322$) and CLOZUK/WTCCC cohorts ($n = 10,791/24,391$) that used array data, we used a version of the PGC2 SCZ data that excluded the CLOZUK/WTCCC samples [6]. Only autosomal SNPs with high imputation quality ($INFO > 0.9$) were kept in these discovery datasets. In all target datasets, we used only variants with $MAF > 10\%$ and excluded variants from the X chromosome, the 22q11.2 deletion region, and the Major Histocompatibility Complex (due to complex linkage disequilibrium patterns in the region) to calculate PRS. We also excluded ambiguous SNPs (A/T and C/G) that posed challenges in matching between discovery and validation sets. Specific coordinates of excluded regions are described in the Supplementary Material.

Using PRSice, we clumped SNPs from the discovery datasets ($R^2 > 0.1$, 250 kb window), and then selected clumped SNPs at 13 p value thresholds (pTs) (ranging from $< 10^{-6}$ to 1). For each pT, PRSice constructed a PRS for each individual from the target datasets as an average of the per-allele score for each eligible SNP. The per-allele score for a SNP was calculated as half the product of the number of reference alleles (0, 1, or 2) and the estimated log odds ratio for the SNP in the discovery dataset.

For the 22q11.2DS-only analysis using WGS data, we used logistic regression to test for association between disease status and standardized PRS, adjusting for the same covariates (sex, top three principal components for ancestry) as for the analyses of individual common variants above. For the 22q11.2DS-CLOZUK/WTCCC joint analysis, we adjusted for sex and the top three principal components from the array data. For the PRS comparison between WGS and array data the same number of covariates were used (top three principal components for ancestry and sex) but using the principal components from each respective dataset. For all models, we used PRSice-2 to calculate both odds ratios per standard deviation of PRS as well as Nagelkerke's pseudo- R^2 values to estimate the proportion of variance in schizophrenia explained by the PRS. We adjusted for testing of multiple correlated PRSs under different pTs using the P_ACT method [21].

Rare variant analyses

Rare variant analyses were conducted on the 432 subjects in the European subset used for PRS analysis. We defined rare variants as those with gnomAD global frequency $\leq 1\%$ and 22q11.2DS sample frequency $\leq 1\%$ for all variants, but analyzed those from the 22q11.2 deletion region separately (Table S2). We also performed analyses using five different sets of filtered variants, based on (1) any variant with

Combined Annotation Dependent Depletion, CADD [17], > 30, (2) any variant with CADD > 15, (3) any missense variant, (4) any missense variant with CADD > 15, and (5) any predicted loss-of-function (LOF) mutation (defined as stop-gains, frameshift, core splice site alterations, stop-loss, or start-loss). For each filtered set, we first performed single-variant analysis using Fisher's Exact Test within PLINK 1.9. We then used the R package SKAT [22] to perform burden and variance-component (i.e., SKAT) tests within genes. For each filtered variant set, we considered only those genes with ≥ 5 rare variants observed in the 22q11.2DS European sample. We performed both unweighted and weighted analyses in a gene with the latter upweighting effects of extremely rare variants using a beta (0.5,0.5) distribution. For all analyses, we adjusted for sex, top three principal components of ancestry, total number of genome-wide variants, and PRS based on WGS data.

In addition to gene-based analyses, we performed weighted and unweighted gene-set burden analyses with 30 functional pathways (Table S3) previously used to study CNV enrichment in schizophrenia, involving genes relevant to neuronal functions and synaptic components, or genes with homologs in mouse genes grouped by organ system [10]. These analyses used the same filtering scheme described above and adjusted for multiple correlated tests using P_ACT [21]. As a complementary analysis, we constructed logistic-regression models that, for a given pathway, assumed distinct effects for burden of LOF mutations and burden of missense variants passing or not passing CADD > 15. We then used a likelihood-ratio statistic to test the null hypothesis that coefficients for all burden variables were equal to 0. These logistic-regression models used the same rare variant-weighting schemes and covariate adjustment as above. To adjust for multiple testing, we estimated the false discovery rate (FDR) based on outcome-label permutations balanced on covariates using the R package BiasedUrn [23]. Finally, we also performed genome-wide and deletion region-wide burden tests of global rare variation (i.e., regardless of gene function) between cases and controls using the same filtering schemes, variant-weighting schemes, and covariate adjustments as above.

Results

22q11.2DS sample

The main sample comprised 435 unrelated individuals of European ancestry with a 22q11.2 deletion: 214 with schizophrenia (mean age at onset 22.1 (SD 8.3) years; mean age at assessment 30.9 (SD 12.8) years) and 221 with no lifetime diagnosis of psychotic disorder and age ≥ 25 years

(mean age at assessment 36.4 (SD 10.0) years) [5]. Sample characteristics are representative of those for all ethnicities (Table S4). The results for 22q11.2 deletion sizes showed the expected $\sim 90\%$ of subjects with the typical 2.5 Mb LCR22A-LCR22D 22q11.2 deletion (Fig. 1) [1, 5] and no significant difference in distribution between the two phenotypic subgroups ($X^2 = 0.0024$, $df = 1$, $p = 0.96$).

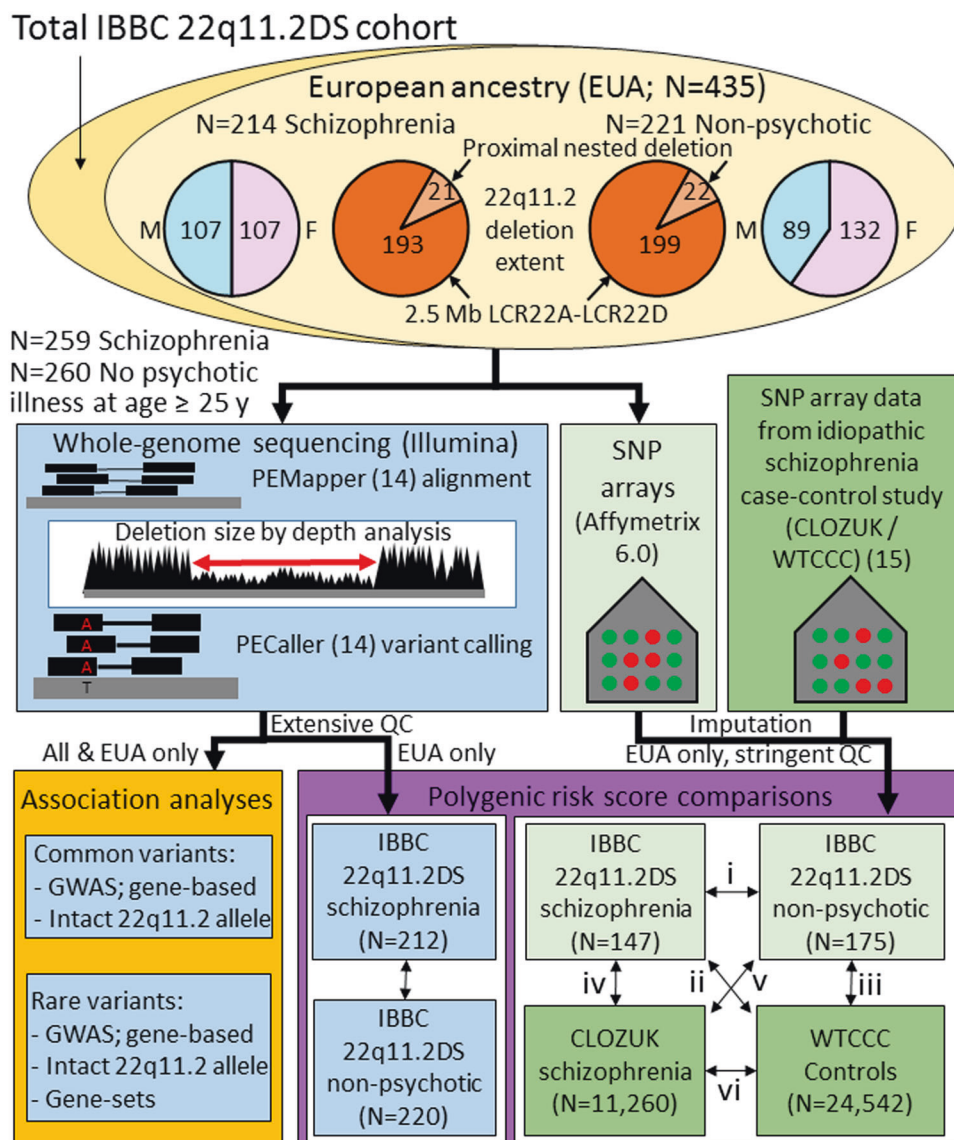
Genome-wide schizophrenia polygenic risk score (PRS)

Using the PRS to analyze common variants collectively in 22q11.2DS showed that the PRS was significantly higher in those with schizophrenia than in those with no psychotic illness; significance was greatest using a pT of 0.05 to select individual SNPs from the training set [13] (Nagelkerke's pseudo- $R^2 = 0.077$, $p_{\text{adjusted}} = 6.73 \times 10^{-6}$). The risk of schizophrenia in individuals with 22q11.2DS increased by 1.77-fold (95% CI: 1.41–2.22) for every incremental standard deviation in PRS (Fig. 2a, b; Table S5 shows results for other pT values). Using pT = 0.05, individuals within the highest quartile of PRS had a 3.42-fold (95% CI: 1.88–6.22) increased risk of schizophrenia compared with those in the lowest quartile (Fig. SF2).

Using a subset of samples for which imputed data were available from microarray-based genotypes allowed us to directly compare schizophrenia PRS between 22q11.2DS ($n = 322$; 147 with schizophrenia, 175 without psychotic illness) and an idiopathic schizophrenia case–control cohort with no 22q11.2 deletion (10,791 schizophrenia CLOZUK cases, 24,391 WTCCC controls) [6]. We first ensured the concordance of genotypes obtained by array and WGS (mean [median] variant concordance of 99.4% [99.6%]) and observed similar PRS distributions across methods (Fig. SF3); see Supplementary Results for more details. Using this smaller sample and imputed data we again found significant differences in PRS for the 22q11.2DS-schizophrenia group compared with those with no psychotic illness (pT = 0.05: $R^2 = 0.063$, $p_{\text{adjusted}} = 5.5 \times 10^{-4}$, OR = 1.63, 95% CI: 1.27–2.08; Fig. 3a(i), b(i)), confirming that the PRS results were comparable with those using WGS data. We also confirmed the significant difference in PRS between the CLOZUK-schizophrenia and the WTCCC-control samples, which was comparable with the results obtained when using larger case–control datasets [6, 13]: pT = 0.05: $R^2 = 0.11$, $p_{\text{adjusted}} < 2 \times 10^{-16}$, OR = 2.05, 95% CI: 2.00–2.11; Fig. 3a(vi), b(vi)).

We then proceeded to examine novel reciprocal case–control comparisons between the 22q11.2DS and population-based cohorts (Fig. 1). Individuals with 22q11.2DS-schizophrenia had a significantly higher PRS than WTCCC controls (pT = 0.05: $R^2 = 0.014$, $p_{\text{adjusted}} = 3.8 \times 10^{-6}$, OR = 1.53, 95% CI: 1.29–1.81; Fig. 3a(ii), b(ii)).

Fig. 1 IBBC 22q11.2DS cohort overview and schematic of data generation and analyses performed. The full IBBC cohort and European subset are illustrated as yellow circles, broken down by numbers with or without schizophrenia, as well as sex and 22q11.2 deletion extent for individuals of European ancestry. Whole-genome sequencing methods and data are represented by blue boxes and microarray data represented by green boxes (lighter for IBBC 22q11.2DS data, darker for schizophrenia case-control study data [15]). i–vi represent the comparisons presented in Fig. 3 for novel reciprocal case-control comparisons of schizophrenia PRS between the 22q11.2DS and population-based cohorts.



Similarly, the CLOZUK-schizophrenia group had a significantly higher PRS than the 22q11.2DS-nonpsychotic group ($p_T = 0.05$; $R^2 = 0.047$, $p_{\text{adjusted}} < 2 \times 10^{-16}$, OR = 2.05, 95% CI: 1.74–2.41; Fig. 3a(v), b(v)). These results indicate that PRS was significantly greater in individuals with psychotic illness, regardless of the presence of the 22q11.2 deletion.

Within diagnostic group analyses revealed that the PRS observed in schizophrenia cases from the CLOZUK cohort was significantly greater than that seen in those with schizophrenia and 22q11.2DS ($p_T = 0.05$; $R^2 = 0.0065$, $p_{\text{adjusted}} = 0.01$, OR = 1.31, 95% CI: 1.10–1.55; Fig. 3a(iv), b(iv)). The PRS results for the nonpsychotic 22q11.2DS group were not significantly different than those for WTCCC controls (Fig. 3a(iii), b(iii)); however, the 22q11.2DS

sample size was underpowered for this comparison given the low effect size (Table S6).

We assessed the consistency of these results with a liability threshold model that assumed additive effects of the 22q11.2 deletion and PRS on risk for schizophrenia; details of our methodology and results are provided in the Supplementary Methods and Table S7. The model that best fit the observed data (where the sum of the absolute difference in observed and expected PRS was the lowest (0.005) across all four cohorts) estimated that the PRS contributes to 5.2% (range 4.9–5.5%) of the variance of liability for schizophrenia. This best-fit model also provided an estimate of the shift in liability attributable to the 22q11.2 deletion (1.0, range 0.2–1.9) from population-based expectations of schizophrenia prevalence (2.33, based on top 1% CI of the

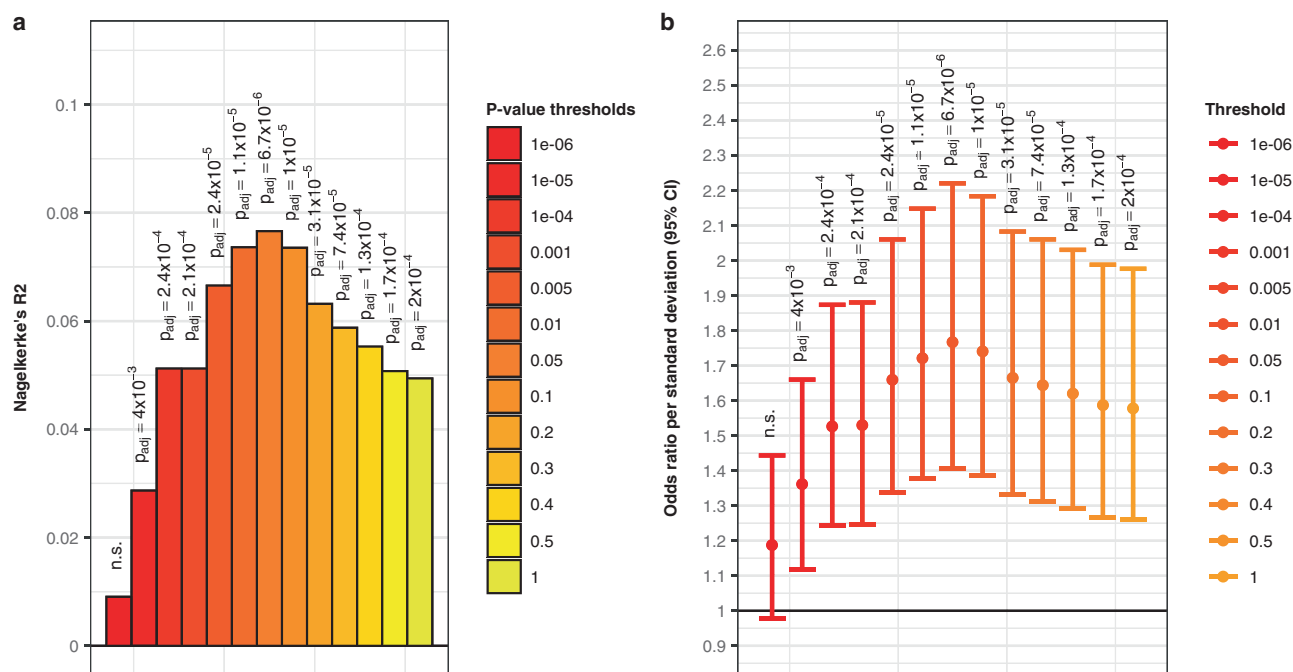


Fig. 2 Polygenic risk score analyses of schizophrenia in 22q11.2DS. Analysis of schizophrenia PRS in 432 individuals of European ancestry with 22q11.2DS, with ($n = 212$) or without ($n = 220$) schizophrenia. Variants from the 22q11.2 deletion, MHC regions and X chromosome were excluded and results adjusted for sex, top three ancestry PCs. P values were adjusted using P-ACT for the 13 p value thresholds (pT) used for PRS construction [13]. Details on the number of SNPs used (maximum 68,966 SNPs for polygenic risk scoring at

pT = 1, minimum 202 SNPs at pT = 1×10^{-6}) are shown in Table S9. **a** The proportion of variance in schizophrenia explained by PRS (Nagelkerke's R^2) across different pT thresholds. At pT = 0.05, Nagelkerke's pseudo- $R^2 = 0.077$ ($p_{\text{adjusted}} = 6.73 \times 10^{-6}$). **b** Odds ratio and 95% confidence interval bars per one standard deviation increase in PRS across different pT thresholds. At pT = 0.05 a one standard deviation increase in PRS corresponded to a 1.77-fold higher odds for schizophrenia in 22q11.2DS.

normal distribution). In comparison, an increase in the PRS by one standard deviation corresponds to a shift in liability of 0.23. Working back from the estimated shift in liability attributable to the 22q11.2 deletion (i.e., $2.33 - 1.00 = 1.33$) provides a predicted prevalence of schizophrenia in 22q11.2DS of 9.2% (range 1.7–33.7%) (Table S7). Using this best-fit liability threshold model to calculate the sample sizes required to provide 80% power to detect a nominally significant difference in PRS at pT = 0.05, indicated that apart from the comparison of PRS between 22q11.2DS individuals without psychosis and WTCCC controls, all other primary analyses of polygenic risk were sufficiently powered (Table S6).

Common variants—intact 22q11.2 allele and genome-wide association (GWAS)

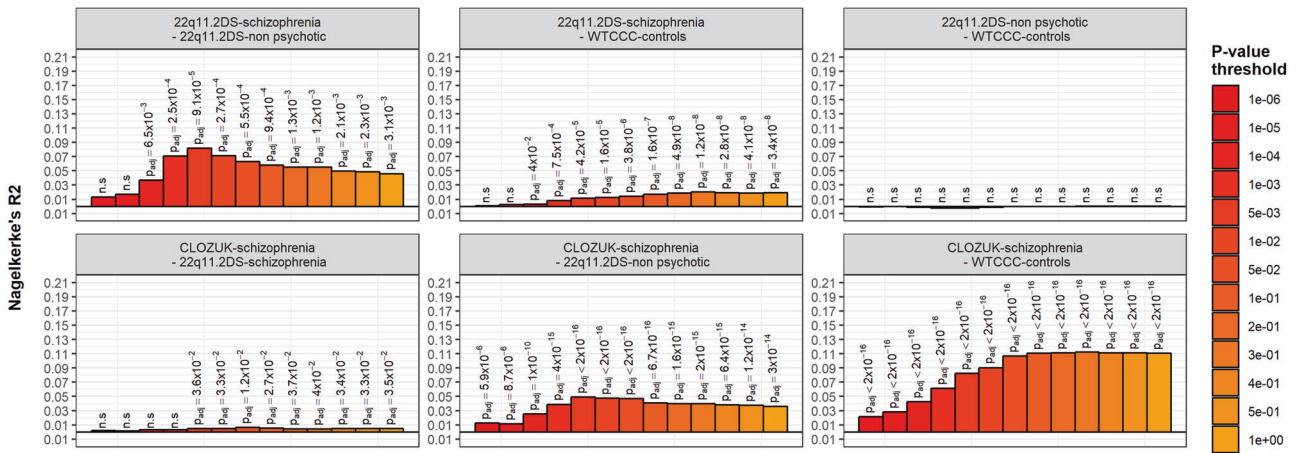
Given previous evidence for a genetic modifier locus in studies of cardiac phenotypes in 22q11.2DS [24], we considered the possibility that individual genetic risk factors could confer an elevated effect size in association analyses of 22q11.2DS that compared those with and without schizophrenia. We examined this possibility by conducting association analyses of individual SNPs,

restricted to the 22q11.2 deletion region (3252 SNPs for full dataset, 3236 SNPs for European ancestry) and genome-wide (4,313,064 SNPs outside this deletion region). None of these analyses identified genome-wide significant associations with schizophrenia in either the European cohort ($n = 435$) or total cohort ($n = 519$) (Figs. SF4–SF9, Tables S8–S11). Genome wide, the top SNP was rs12824373 ($p = 6.91 \times 10^{-7}$), located in an intron of the *CRADD* gene. This SNP was not significantly associated with schizophrenia in the PGC GWAS [13]. Also, no SNP previously reported to reach genome-wide-significant levels of association with schizophrenia [13] yielded suggestive evidence of association in this GWAS of 22q11.2DS (minimum unadjusted p value = 7.4×10^{-3} ; Table S12). The results were also nonsignificant when restricting to 724,010 SNPs in 2925 LOF-intolerant genes [6] (minimum $p = 4.88 \times 10^{-5}$).

Rare variants—individual, gene-based and gene-set analyses

Similar to common variant results, there was no significant association of schizophrenia with any individual rare variant, nor for individual gene-based rare variant analyses,

a (i-vi)



b (i-vi)

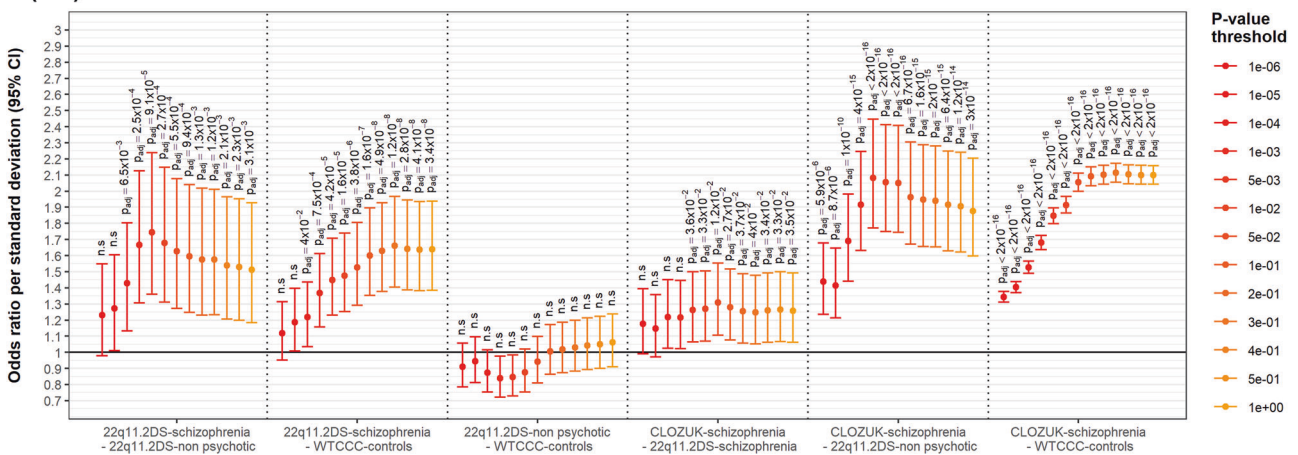


Fig. 3 Polygenic risk score analyses in 22q11.2DS individuals with or without schizophrenia, and a case-control cohort without 22q11.2DS. PRS analyses were performed for 322 individuals with 22q11.2DS (147 with schizophrenia, 175 without) and 35,182 individuals with no 22q11.2 deletion (10,791 schizophrenia CLOZUK cases, 24,391 WTCCC controls) [6]; all subjects were of European ancestry. Six comparisons of schizophrenia PRS were considered (Fig. 1) between: (i) individuals with 22q11.2DS, with and without schizophrenia (ii) 22q11.2DS-schizophrenia and WTCCC controls (iii) 22q11.2DS-nonpsychotic and WTCCC controls (iv) the CLOZUK-schizophrenia cohort and 22q11.2DS-schizophrenia, (v) the

CLOZUK-schizophrenia cohort and 22q11.2DS-nonpsychotic, and (vi) the CLOZUK-schizophrenia cohort and WTCCC controls. **a** The proportion of variance explained by PRS (Nagelkerke's R^2) for each of the six comparisons (clockwise: i–vi). **b** The odds ratio and 95% confidence interval bars per PRS standard deviation constructed for these six PRS analyses (left to right: i–vi). Taken as a whole, these results demonstrate that the PRS in the CLOZUK-schizophrenia is significantly greater than that seen in 22q11.2DS individuals with schizophrenia, which itself is significantly greater than that seen in the WTCCC controls and the 22q11.2DS-nonpsychotic groups.

within or outside the 22q11.2 deletion region (Fig. SF10, Tables S13–15). There were few LOF variants within the 22q11.2 deletion region (i.e., in effect, knockout mutations) (Fig. 4).

Analyzing genome-wide rare variants collectively in functional gene sets (Table S3), comparable with methods used previously [5, 10], but with the addition of accounting for polygenic risk in 22q11.2DS, showed nominally significant results (Table 1, Table S16). The top four results (unadjusted p values 5.9×10^{-3} – 5.5×10^{-4}) implicated the Kirov_ARC gene set [11, 25]. Though none remained

significant after adjustment for multiple testing, one result was borderline significant ($p = 0.053$) after correcting for 300 tests (Table 1). Overall genome-wide rare variant burden (i.e., regardless of gene function) showed no significant relationship to schizophrenia (unadjusted p values: genome-wide 0.35–0.79, 22q11.2 deletion region 0.02–0.79; Tables S17–18). Similarly, there was no significant enrichment of heterozygous truncating variants ($p = 0.76$) in a gene set comprising 2925 genes considered intolerant to LOF variation (gnomAD 2.1 observed/expected LOF, upper 95% CI < 0.35).

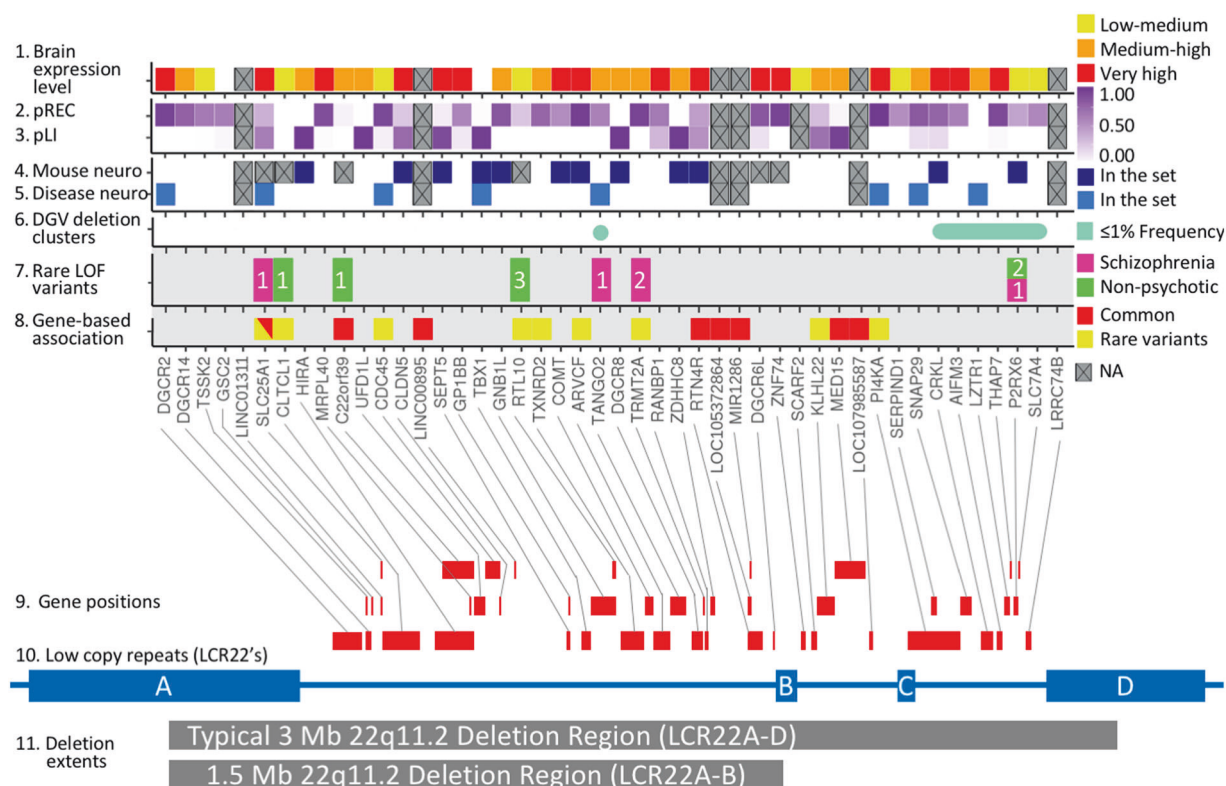


Fig. 4 Representation of 46 genes spanning the 22q11.2 low copy repeat (LCR) LCR22A-LCR22D deletion region annotated for contextual information and, on gray background, results from the current study. The sections numbered 1–11 indicate the following: (1) Gene expression in brain, ranging from none-low (white) to low-medium (yellow) to medium-high (orange) to very high (red) according to BrainSpan (BrainSpan: Atlas of the Developing Human Brain [<http://developinghumanbrain.org>] [<http://developinghumanbrain.org>]) and as previously processed by [10]; (2 and 3) Exome Aggregation Consortium (ExAC) [49] calculated probability (ranging from 0 to 1.00, shown as a spectrum from white to deep violet) that the gene is intolerant to [2] two LOF variants (recessive; pREC), or [3] a single-LOF variant (haploinsufficient; pLI); (4 and 5) Neurophenotype data availability [4], from mouse in the form of mouse homologs from MGI [50] as a union of two MPO-based gene sets [MP:0005386 behavior/neurological phenotype, MP:0003631 nervous system phenotype] as used in [10], and [5] for human neurologic disease genes from the Clinical Genomic Database (CGD) (CGD: Clinical Genomic Database. [<https://research.nhgri.nih.gov/CGD/>]); (6) Clusters of small rare deletions in the general population per the Database of Genomic Variants (DGV) [51], indicating presumed tolerance to hemizyosity, where an aqua circle/oval represents a single-

deletion cluster of $\leq 1\%$ frequency; (7) Rare LOF variants found in this 22q11.2DS cohort, thus representing a presumed null mutation, each variant observed in a single individual either within the schizophrenia (magenta) or nonpsychotic (green) subgroups; number indicates the number of individuals (1, 2, or 3) in the schizophrenia or nonpsychotic group with a LOF variant identified; (8) Genes in the 22q11.2 deletion region that show nominal significance for rare variants (in yellow, p values ranged between 7.92×10^{-3} and 4.75×10^{-2} based on SKAT or Burden test) or for common variants (in red, p values ranged between 3.63×10^{-3} and 4.23×10^{-2} based on SKAT test) in gene-based association tests for schizophrenia in this study using data for the subset of European ancestry. All results for the SKAT gene-based test for common variants can be found in Table S19. Note that all genes with nominal significance for rare variants are indicated in yellow, but that only *CDC45*, *PI4KA*, *CLTCL1* and *TRMT2A* comply with the $n \geq 5$ rare variants criterion (see Table S15 for exact number of rare variants). (9) Schematic of gene positions in the 22q11.2 region. (10) Schematic of the positions, relative to genes, of the main 22q11.2 deletion region LCR22s A, B, C, and D. (11) Approximate genomic extents of the two most common 22q11.2 deletion sizes. NA = Data not available.

Using a complementary multivariate method to assess the functional genome-wide rare variant burden supported the Kirov_ARC gene set [11] as the most promising (permutation-based FDR $\sim 25\%$) of the 30 gene sets tested, but revealed possible heterogeneity of findings (Fig. SF11). For rare missense variants in this gene set, the coefficients were negative, indicating the variant burden is enriched in the nonpsychotic 22q11.2DS group.

(Wald p value, coefficient: 2.6×10^{-3} , -0.35 for missense CADD > 15 variants; 0.04 , -0.22 for other missense variants). In contrast, the contribution of LOF SNVs was positive (Wald p value = 0.21 , coefficient = 0.16), though nonsignificant, suggesting that for the Kirov_ARC gene set, the LOF rare variant burden may be somewhat enriched in those with schizophrenia. The main gene driving the putatively protective rare missense burden signal for

Table 1 Gene-set burden association results for rare variants in Kirov ARC pathway and schizophrenia in 432 European subjects with 22q11.2DS.

Burden (SKAT)				
Variant group and weight		<i>P</i> value	Adjusted <i>P</i> value (FWER)*	
Missense—any		0.00055	0.053	
Missense—any, weighted for rarity		0.0028	0.22	
Any with CADD > 15		0.0045	0.31	
Missense with CADD > 15		0.0059	0.37	
Burden (logistic regression) ^a				
Variant group	Coefficient point estimate	Coefficient ward <i>P</i> value	Global <i>P</i> value	Adjusted <i>P</i> value (permutation-FDR)**
LOF Indel	NA	NA	0.0012	0.25
LOF SNV	0.17	0.12		
Missense with CADD > 15	−0.30	0.0065		
Missense other	−0.22	0.034		

Kirov_ARC = 28 genes in an activity-regulated cytoskeleton-associated protein (ARC) complex curated by George Kirov [11].

*Adjusted *p* value based on multiple test correction using P_ACT for the 300 tests conducted (30 gene-sets [10] × 5 variant filters × 2 weighting schemes).

**Adjusted *p* value based on multiple test correction using permutation-based FDR for 1000 iterations of 360 tests (30 gene sets [10] × 2 variant sets × 3 frequency weighting schemes × 2 PRS and no PRS).

^aBurden result based on a logistic-regression model combines effects from different types of rare variants (LOF Indel, LOF SNV, missense with CADD > 15, and missense other) with PRS as one of the covariates.

the Kirov_ARC gene set was *DLGAP2* (gene-level nominal *p* value = 0.01, CADD > 15 missense variants).

Discussion

The results of this study provide new data relevant to our understanding of the genetic architecture underlying the exceptionally increased risk for developing schizophrenia and related psychotic illnesses imparted by the 22q11.2 deletion [1]. We demonstrate for the first time that individuals with 22q11.2DS who develop schizophrenia have a significantly greater schizophrenia PRS than those with no psychotic illness, suggesting that both the 22q11.2 deletion and the aggregate risk conferred by common genetic risk factors outside the deleted region contribute to schizophrenia in 22q11.2DS. There was no evidence for contributions from common or rare variants at the individual variant or gene-based level. There was however some suggestive evidence that rare coding variants in genes involved in ARC synaptic gene complexes, previously reported to be involved in large population-based schizophrenia samples [8–12], may contribute to modifying risk of schizophrenia in 22q11.2DS.

Contribution of genome-wide polygenic risk

The PRS results showing that collective common genetic risk factors independent of the 22q11.2 deletion have a substantive role in increasing risk of schizophrenia in 22q11.2DS, are consistent with research indicating the importance of polygenic risk in developing schizophrenia in large general population studies [6, 13]. They are also consistent with findings for individuals with other CNVs that increase risk for neuropsychiatric and neurodevelopmental disorders [26–28]. They differ somewhat from those of a study examining CNVs ascertained as part of the PGC that reported small PRS effects in 56 individuals with schizophrenia and a 22q11.2 deletion, in contrast to greater PRS effects for CNVs with low risk for schizophrenia that were also present in control samples [26]. Availability of nonpsychotic control groups and the sample sizes available could have contributed to the strong effect of schizophrenia PRS observed in our study.

The ability to directly compare PRS between individuals with 22q11.2DS and cohorts of schizophrenia and controls with no 22q11.2 deletion allowed us to determine that the contribution of polygenic risk to schizophrenia was slightly but significantly lower in those with, than in those without a

22q11.2 deletion [6]. This suggests that when our results are considered according to the liability threshold model, the presence of the 22q11.2 deletion may lower to some extent the degree of background polygenic risk involved in developing schizophrenia.

Broad confidence intervals precluded our ability to determine additive or other relationships between the PRS and 22q11.2 deletion. Nonetheless, assuming an additive liability model, the proportion of variance liability for schizophrenia in 22q11.2DS attributable to the PRS was estimated to be 5.2% (range 4.9–5.5%), which is in line with the estimates of 7 and 5.7% reported previously for idiopathic schizophrenia [6, 13]. Based on this model there were wide ranges for the estimated shift in liability attributed to the 22q11.2 deletion (from the expected 1% population prevalence of schizophrenia) (Table S7) and estimated schizophrenia prevalence in 22q11.2DS (1.7–33.7%). The latter values would therefore embrace the low estimates reported in other studies using statistical models [29, 30] and the actual observed prevalence of psychotic illness in 22q11.2DS of > 20% [1, 31, 32].

Contribution of genome-wide rare variant functional gene sets

Complementary to the polygenic risk results, and in innovative analyses that accounted for PRS effects, the results also indicated a possible role for rare variants in the gene set representing the ARC postsynaptic protein complex [8–12, 25]. Consistent with our results in 22q11.2DS, effect sizes are expected to be modest for individual rare SNVs and related gene-set results in schizophrenia [25]. It is therefore encouraging that our results for 22q11.2DS provided suggestive evidence in line with multiple studies that have reported rare variants, both SNVs and CNVs, affecting coding sequence of genes from the ARC and closely related synaptic gene sets to be significantly associated with idiopathic schizophrenia [8–12, 29]. Higher powered studies will be needed to evaluate the precise genomic architecture, including direction of effect patterns for rare variants [11, 25, 33, 34].

Role of the 22q11.2 deletion and possible genetic mechanisms

We have proposed that the presence of the 22q11.2 deletion may lower an individual's tolerance for the expression of multiple biological mechanisms and/or pathways involved in developing schizophrenia [3, 5], and anticipate that this is likely to be related to the collective effect of lowered multi-gene dosage at the 22q11.2 locus. Importantly, we did not find evidence for risk attributable to the 22q11.2 deletion to be mediated through common or rare variants of genes

located on the intact 22q11.2 allele, suggesting that it is unlikely that such variants have a large effect on schizophrenia risk. This included the few LOF (in effect null) variants that we identified (Fig. 4) and are now the focus of an in-depth reverse phenotyping effort. These negative results appear consistent with a recent study of idiopathic schizophrenia reporting the absence of detectable individual gene effects for 22q11.2 deletion genes, in contrast to genes in other CNV regions [35].

Establishing the exact biological mechanisms through which the 22q11.2 deletion confers increased risk to schizophrenia is beyond the scope of this study. However, given the profile of the genes in this region, including those encoding transcription factors, mitochondrial proteins, and others, and the fact that most are expressed in brain (Fig. 4), the 22q11.2 deletion region may be particularly prone to general neurodevelopmental perturbation, and impaired regulatory mechanisms. For example, haploinsufficiency of *DGCR8* affects miRNA buffering genome-wide, thus could reveal or enhance effects of common and rare variants elsewhere in the genome [36–41]. Many of the genes in the ARC gene set, for example, are predicted to be affected by *DGCR8* haploinsufficiency [36, 41].

Large GWAS of schizophrenia indicate that the multiple SNPs involved at each significant locus are mostly intergenic or intronic, tag protein-coding and miRNA genes, and increase or decrease risk in about equal proportions, each with a very small effect size [6, 13]. Thus the common variant signal measured by polygenic risk may be consistent with a role for noncoding and/or regulatory mechanisms in schizophrenia, including in 22q11.2DS [6, 13, 37, 41, 42]. The precise complement of common and rare variants leading to schizophrenia may be personal to the individual but nonetheless observable in aggregate across individuals [43, 44]. Further investigations designed to determine the exact nature of the primary 22q11.2 deletion-related biological insult therefore promises to improve our understanding of the mechanisms underlying schizophrenia in both 22q11.2DS and the general population.

Advantages and limitations

We had available the largest sample of 22q11.2DS subjects with and without a psychotic disorder ever brought together to study the impact of common and rare SNVs to schizophrenia risk. The signal imparted by additional polygenic common variant risk, similar to previous studies using idiopathic schizophrenia case-control samples several orders of magnitude larger [6, 13], produced clearly significant results. The results support our design, using the nonpsychotic 22q11.2DS subgroup as the main comparison for 22q11.2DS cases with schizophrenia subgroup within 22q11.2DS. A power analysis indicated that our primary analyses of polygenic risk using the

22q11.2DS-schizophrenia group were adequately powered for comparisons with 22q11.2DS without psychotic illness and with the large population-based case-control samples. Also, to our knowledge, this was the first study of schizophrenia genetics to account for polygenic risk while analyzing rare variant burden.

Despite these advantages, power was limited by the available cohort size (Fig. SF12) and would be affected by the possibility that some 22q11.2DS subjects in the non-psychotic group may go on to develop schizophrenia. It is probable that some of the genome-wide polygenic risk associated with schizophrenia may also be involved in other neurodevelopmental disorders [45]. This may make the current results all the more remarkable, given the presence of one or more neurodevelopmental phenotypes in most individuals with 22q11.2DS [46].

With respect to rare variants, the current study focused primarily on the signal derived from the exome where findings are more likely to be biologically interpretable and potentially clinically relevant than that from noncoding variants [5, 33]. Our conservative design, e.g., for each filtered variant set, considering only those genes with five or more rare variants observed in the 22q11.2DS sample of European ancestry, and using 30 gene sets thus correcting for 300 tests, may have affected power. Also, as in other sequencing studies [25], certain variant types, e.g., indels, were imperfectly captured [14]. Recruiting larger samples of individuals with schizophrenia and older adults with no psychotic illness from the 22q11.2DS population could provide the means to further delineate the strength of the relationship between the factors identified, including rare variants in the small ARC gene set, and the risk for schizophrenia. This would also be essential to enable investigation of other mechanisms with lower effect sizes. In future studies, larger samples of 22q11.2DS may also assist in determining the role of X chromosome variants in the context of a 22q11.2 deletion, and provide sufficient data to assess those of non-European ancestry [5].

Although we were unable to use these WGS data to simultaneously assess CNVs or other structural variants [14], we have previously demonstrated in a smaller but overlapping sample that additional rare CNVs overlapping genes outside of the 22q11.2 deletion region contribute to schizophrenia risk in 22q11.2DS [5]. Also, the IBBC proband-only 22q11.2DS sample provides no capability of examining inheritance, parent-of-origin, or segregation data for the 22q11.2 deletion or any other variants, or the family history of schizophrenia, all of which are factors of interest in disease expression [1, 3, 5]. In smaller samples, the parental origin and inheritance status of the 22q11.2 deletion have not appeared to play a role in schizophrenia, however [47], and one can expect that > 90% of the 22q11.2 deletions would arise as *de novo* mutations [1].

Conclusions

Our results indicate that, despite its high impact, the risk conferred by the 22q11.2 deletion is even greater when present with the genome-wide risk factors that also have a key role in schizophrenia risk in the general population [6, 13, 25]. Given the magnitude of the risk of the 22q11.2 deletion relative to common genetic risk factors, including polygenic risk, understanding the biological consequences of this deletion will be an important next step in appreciating the underlying pathology of schizophrenia. The overall results further illustrate the value of using 22q11.2DS as a model for delineating the genetic architecture of schizophrenia. The direction of effect, and the type and precise position of the additional variants will be important factors to consider. Lessons learned from 22q11.2DS may be applicable to other recurrent CNVs that contribute to risk for schizophrenia in the general population [10]. Future analyses of raw WGS data will allow for more detailed assessment of variants and pathways implicated, and the overall genetic architecture and proposed mechanisms of schizophrenia, incorporating those related to structural variants [5]. These observations have important implications for research, including functional genomic studies using induced pluripotent stem cells from individuals with 22q11.2DS to model schizophrenia, and potentially for clinical genetic practice. Given the magnitude of the effect size of the 22q11.2 deletion, prospective studies using algorithms generated from such sequence data together with phenotypic data relevant to schizophrenia risk could lead to findings of clinical relevance to the individual [3, 48].

Acknowledgements The IBBC is supported by the National Institute of Mental Health grants U01MH101719, U01MH101720, U01MH101723, U01MH101722, and U01MH101724. Other grant support includes: Brain and Behavior Foundation Young Researcher grant (formerly NARSAD, grant no. 21278) to MA, Fondecyt-Chile Grant 1171014 to RF, CO, and GMR, grant FWO G.0E11.17N to JRV, MRC Centre grant MR/L010305/1, National Institute of Mental Health grant U01MH101724, and Welsh Government funded Research Centre 514032 to MJO, NARSAD (Brain and Behavior Research Foundation) to OYO, National Institute of Mental Health grant MH064824 to KMA, WF, WRK, and TJS, NIH grant R01GM117946 to MPE, RD and AJV, NIH grant U54NS091859 to PC, PE, HRJ, and STW, NIH grant R01MH100917 to DJC, PE, AVK, JGM, and MEZ, NIMH K01 MH112774 to MJ, NIMH R01 MH085953 and NIH U54 EB020403 to CEB and LK, NIMH U01MH101724 to MvdB, P01HD070454 to TBC, AD, BSE, TG, AJ, BL, DMM-M, DEM, EMM, BEM, HIS, RJS, OT, MU, EHZ, and YZ, P50MH09689 and R01-MH-1072351 to REG, P50MH096891 to MEC and RCG, National Institute of Mental Health R01 MH085953 to CMM and DGM, R01-MH-107235 to RCG, Canadian Institutes of Health Research grant MOP-74631 to EWCC, Swiss National Science Foundation (Grant number 324730_144260) and National Center of Competence in Research (NCCR) “Synapsy-The Synaptic Bases of Mental Diseases” (Grant number 51NF40-185897) to SE, T32 MH019112 to SXT, the Binational Science Foundation, grant 2017370

to DG, U01 MH087626 to MEC, RSG, RCG, and REG, U54HD090260 to AD, TG, BEM, and YZ, U01-MH191719 and R01 MH087636-01A1 to TBC, BSE, AJ, BL, DMM-M, DEM, EMM, HIS, RJS, OT, MU, and EHZ, Van de Werf fund for cardiovascular research to JB, IWT 131625 to WD, Wellcome Trust grant 102428/Z/13/Z to TM and NMW, and Canadian Institutes of Health Research grants MOP-79518, MOP-89066, MOP-97800 and MOP-111238, a McLaughlin Centre Accelerator grant, the Canada Research Chairs program, and Dalglish Chair to ASB. The authors thank all individuals with 22q11.2 deletion syndrome and their families for their generous contributions to this and related research studies, and are grateful to support charities including Max Appeal, The 22Crew and Unique. This work included participants of the NCMH study, a collaboration between Cardiff, Swansea and Bangor Universities. We thank the following members of the Division of Psychological Medicine and Clinical Neurosciences at the Cardiff School of Medicine for technical assistance: S. Chawner, A. Cunningham, C. Eaton, A. Evans, S. Morrison, H. Moulding, P. Birch, M. Tong, S. Bowen, L. Bengler, M. Thomas, L. Reed, C.T. Carmichael, L. Bates, B. Lugonja, J. Morgan, N. Vinh, A. Evans, L. Hopkins, L. Tram, S. Jacques, S. Lewis.

Compliance with ethical standards

Conflict of interest DM is a full-time employee and is entitled to a stock option of Deep Genomics Inc., a start-up developing oligonucleotide therapeutics for rare genetic disorders. FT received funding from Zynerba and Asuragen Inc. for her work on Fragile X syndrome. All other authors report no financial relationships with commercial interests.

Publisher's note Springer Nature remains neutral with regard to jurisdictional claims in published maps and institutional affiliations.

References

- McDonald-McGinn DM, Sullivan KE, Marino B, Philip N, Swillen A, Vorstman JA, et al. 22q11.2 deletion syndrome. *Nat Rev Dis Prim*. 2015;1:15071.
- Fung WL, Butcher NJ, Costain G, Andrade DM, Boot E, Chow EW, et al. Practical guidelines for managing adults with 22q11.2 deletion syndrome. *Genet Med*. 2015;17:599–609.
- Gur RE, Bassett AS, McDonald-McGinn DM, Bearden CE, Chow E, Emanuel BS, et al. A neurogenetic model for the study of schizophrenia spectrum disorders: the International 22q11.2 Deletion Syndrome Brain Behavior Consortium. *Mol Psychiatry*. 2017;22:1664–72.
- Insel TR. Rethinking schizophrenia. *Nature*. 2010;468:187–93.
- Bassett AS, Lowther C, Merico D, Costain G, Chow EWC, van Amelsvoort T, et al. Rare genome-wide copy number variation and expression of Schizophrenia in 22q11.2 deletion syndrome. *Am J Psychiatry*. 2017;174:1054–63.
- Pardinas AF, Holmans P, Pocklington AJ, Escott-Price V, Ripke S, Carrera N, et al. Common schizophrenia alleles are enriched in mutation-intolerant genes and in regions under strong background selection. *Nat Genet*. 2018;50:381–9.
- Singh T, Walters JTR, Johnstone M, Curtis D, Suvisaari J, Torniainen M, et al. The contribution of rare variants to risk of schizophrenia in individuals with and without intellectual disability. *Nat Genet*. 2017;49:1167–73.
- Genovese G, Fromer M, Stahl EA, Ruderfer DM, Chambert K, Landen M, et al. Increased burden of ultra-rare protein-altering variants among 4,877 individuals with schizophrenia. *Nat Neurosci*. 2016;19:1433–41.
- Purcell SM, Moran JL, Fromer M, Ruderfer D, Solovieff N, Roussos P, et al. A polygenic burden of rare disruptive mutations in schizophrenia. *Nature*. 2014;506:185–90.
- Marshall CR, Howrigan DP, Merico D, Thiruvahindrapuram B, Wu W, Greer DS, et al. Contribution of copy number variants to schizophrenia from a genome-wide study of 41,321 subjects. *Nat Genet*. 2017;49:27–35.
- Kirov G, Pocklington AJ, Holmans P, Ivanov D, Ikeda M, Ruderfer D, et al. De novo CNV analysis implicates specific abnormalities of postsynaptic signalling complexes in the pathogenesis of schizophrenia. *Mol Psychiatry*. 2012;17:142–53.
- Fromer M, Pocklington AJ, Kavanagh DH, Williams HJ, Dwyer S, Gormley P, et al. De novo mutations in schizophrenia implicate synaptic networks. *Nature*. 2014;506:179–84.
- Schizophrenia Working Group of the Psychiatric Genomics Consortium. Biological insights from 108 schizophrenia-associated genetic loci. *Nature*. 2014;511:421–7.
- Johnston HR, Chopra P, Wingo TS, Patel V, International Consortium on Brain and Behavior in 22q11.2 Deletion Syndrome, Epstein MP, et al. PEMapper and PECaller provide a simplified approach to whole-genome sequencing. *Proc Natl Acad Sci USA*. 2017;114:E1923–E32.
- Rees E, Kendall K, Pardinias AF, Legge SE, Pocklington A, Escott-Price V, et al. Analysis of intellectual disability copy number variants for association with schizophrenia. *JAMA Psychiatry*. 2016;73:963–9.
- Guo T, Diacou A, Nomaru H, McDonald-McGinn DM, Hestand M, Demareel W, et al. Deletion size analysis of 1680 22q11.2DS subjects identifies a new recombination hotspot on chromosome 22q11.2. *Hum Mol Genet*. 2018;27:1150–63.
- McCarthy S, Das S, Kretzschmar W, Delaneau O, Wood AR, Teumer A, et al. A reference panel of 64,976 haplotypes for genotype imputation. *Nat Genet*. 2016;48:1279–83.
- Loh PR, Danecek P, Palamara PF, Fuchsberger C, Reshef YA, Finucane HK, et al. Reference-based phasing using the Haplotype Reference Consortium panel. *Nat Genet*. 2016;48:1443–8.
- Das S, Forer L, Schonherr S, Sidore C, Locke AE, Kwong A, et al. Next-generation genotype imputation service and methods. *Nat Genet*. 2016;48:1284–7.
- Euesden J, Lewis CM, O'Reilly PF. PRSice: Polygenic Risk Score software. *Bioinformatics*. 2015;31:1466–8.
- Conneely KN, Boehnke M. So many correlated tests, so little time! Rapid adjustment of P values for multiple correlated tests. *Am J Hum Genet*. 2007;81:1158–68.
- Wu MC, Lee S, Cai T, Li Y, Boehnke M, Lin X. Rare-variant association testing for sequencing data with the sequence kernel association test. *Am J Hum Genet*. 2011;89:82–93.
- Epstein MP, Duncan R, Jiang Y, Conneely KN, Allen AS, Satten GA. A permutation procedure to correct for confounders in case-control studies, including tests of rare variation. *Am J Hum Genet*. 2012;91:215–23.
- Mlynarski EE, Sheridan MB, Xie M, Guo T, Racedo SE, McDonald-McGinn DM, et al. Copy-number variation of the glucose transporter gene SLC2A3 and congenital heart defects in the 22q11.2 deletion syndrome. *Am J Hum Genet*. 2015;96:753–64.
- Rees E, Carrera N, Morgan J, Hambridge K, Escott-Price V, Pocklington AJ, et al. Targeted sequencing of 10,198 samples confirms abnormalities in neuronal activity and implicates voltage-gated sodium channels in schizophrenia pathogenesis. *Biol Psychiatry*. 2019;85:554–62.
- Bergen SE, Ploner A, Howrigan D, CNV Analysis Group and the Schizophrenia Working Group of the Psychiatric Genomics Consortium, O'Donovan MC, Smoller JW, et al. Joint

- contributions of rare copy number variants and common SNPs to risk for schizophrenia. *Am J Psychiatry*. 2019;176:29–35.
27. Tansley KE, Rees E, Linden DE, Ripke S, Chambert KD, Moran JL, et al. Common alleles contribute to schizophrenia in CNV carriers. *Mol Psychiatry*. 2016;21:1085–9.
 28. Niemi MEK, Martin HC, Rice DL, Gallone G, Gordon S, Kelemen M, et al. Common genetic variants contribute to risk of rare severe neurodevelopmental disorders. *Nature*. 2018;562:268–71.
 29. Kirov G, Rees E, Walters JT, Escott-Price V, Georgieva L, Richards AL, et al. The penetrance of copy number variations for schizophrenia and developmental delay. *Biol Psychiatry*. 2014;75:378–85.
 30. Hoeffding LK, Trabjerg BB, Olsen L, Mazin W, Sparso T, Vangkilde A, et al. Risk of Psychiatric Disorders Among Individuals With the 22q11.2 Deletion or Duplication: A Danish Nationwide, Register-Based Study. *JAMA Psychiatry*. 2017;74:282–90.
 31. Fung SJ, Sivagnanasundaram S, Weickert CS. Lack of change in markers of presynaptic terminal abundance alongside subtle reductions in markers of presynaptic terminal plasticity in prefrontal cortex of schizophrenia patients. *Biol Psychiatry*. 2011;69:71–9.
 32. Schneider M, Debbane M, Bassett AS, Chow EW, Fung WL, van den Bree M, et al. Psychiatric disorders from childhood to adulthood in 22q11.2 deletion syndrome: results from the International Consortium on Brain and Behavior in 22q11.2 Deletion Syndrome. *Am J Psychiatry*. 2014;171:627–39.
 33. International Multiple Sclerosis Genetics Consortium. Low-Frequency and Rare-Coding Variation Contributes to Multiple Sclerosis Risk. *Cell*. 2018;175:1679–87.
 34. Ganna A, Satterstrom FK, Zekavat SM, Das I, Kurki MI, Churchhouse C, et al. Quantifying the Impact of Rare and Ultra-rare Coding Variation across the Phenotypic Spectrum. *Am J Hum Genet*. 2018;102:1204–11.
 35. Coe BP, Stessman HAF, Sulovari A, Geisheker MR, Bakken TE, Lake AM, et al. Neurodevelopmental disease genes implicated by de novo mutation and copy number variation morbidity. *Nat Genet*. 2019;51:106–16.
 36. Stark KL, Xu B, Bagchi A, Lai WS, Liu H, Hsu R, et al. Altered brain microRNA biogenesis contributes to phenotypic deficits in a 22q11-deletion mouse model. *Nat Genet*. 2008;40:751–60.
 37. Forstner AJ, Degenhardt F, Schrott G, Nothen MM. MicroRNAs as the cause of schizophrenia in 22q11.2 deletion carriers, and possible implications for idiopathic disease: a mini-review. *Front Mol Neurosci*. 2013;6:47.
 38. Schofield CM, Hsu R, Barker AJ, Gertz CC, Blelloch R, Ullian EM. Monoallelic deletion of the microRNA biogenesis gene *Dgcr8* produces deficits in the development of excitatory synaptic transmission in the prefrontal cortex. *Neural Dev*. 2011;6:11.
 39. Brzustowicz LM, Bassett AS. miRNA-mediated risk for schizophrenia in 22q11.2 deletion syndrome. *Front Genet*. 2012;3:291.
 40. Merico D, Costain G, Butcher NJ, Warnica W, Ogura L, Alfred SE, et al. MicroRNA dysregulation, gene networks, and risk for schizophrenia in 22q11.2 deletion syndrome. *Front Neurol*. 2014;5:238.
 41. Merico D, Zarrei M, Costain G, Ogura L, Alipanahi B, Gazzellone MJ, et al. Whole-genome sequencing suggests schizophrenia risk mechanisms in humans with 22q11.2 deletion syndrome. *G3*. 2015;5:2453–61.
 42. Warnica W, Merico D, Costain G, Alfred SE, Wei J, Marshall CR, et al. Copy number variable microRNAs in schizophrenia and their neurodevelopmental gene targets. *Biol Psychiatry*. 2015;77:158–66.
 43. Costain G, McDonald-McGinn DM, Bassett AS. Prenatal genetic testing with chromosomal microarray analysis identifies major risk variants for schizophrenia and other later-onset disorders. *Am J Psychiatry*. 2013;170:1498.
 44. Harrison PJ. Recent genetic findings in schizophrenia and their therapeutic relevance. *J Psychopharmacol*. 2015;29:85–96.
 45. Smeland OB, Bahrami S, Frei O, Shadrin A, O'Connell K, Savage J, et al. Genome-wide analysis reveals extensive genetic overlap between schizophrenia, bipolar disorder, and intelligence. *Mol Psychiatry*. 2019. <https://doi.org/10.1038/s41380-018-0332-x>. [Epub ahead of print].
 46. Swillen A, Moss E, Duijff S. Neurodevelopmental outcome in 22q11.2 deletion syndrome and management. *Am J Med Genet A*. 2018;176:2160–6.
 47. Bassett AS, Marshall CR, Lionel AC, Chow EW, Scherer SW. Copy number variations and risk for schizophrenia in 22q11.2 deletion syndrome. *Hum Mol Genet*. 2008;17:4045–53.
 48. Van L, Boot E, Bassett AS. Update on the 22q11.2 deletion syndrome and its relevance to schizophrenia. *Curr Opin Psychiatry*. 2017;30:191–6.
 49. Karczewski KJ, Weisburd B, Thomas B, Solomonson M, Ruderfer DM, Kavanagh D, et al. The ExAC browser: displaying reference data information from over 60 000 exomes. *Nucleic Acids Research*. 2017;45(D1):D840–D845.
 50. Smith CL, Blake JA, Kadin JA, Richardson JE, Bult CJ. Mouse Genome Database (MGD)-2018: knowledgebase for the laboratory mouse. *Nucleic Acids Research*. 2018;46(D1):D836–D842.
 51. MacDonald JR, Ziman R, Yuen RKC, Feuk L, Scherer SW. The Database of Genomic Variants: a curated collection of structural variation in the human genome. *Nucleic Acids Research*. 2013;42(D1):D986–D992.

Affiliations

Isabelle Cleynen¹ · Worrawat Engchuan² · Matthew S. Hestand^{1,3,4} · Tracy Heung^{5,6} · Aaron M. Holleman⁷ · H. Richard Johnston⁸ · Thomas Monfeuga⁹ · Donna M. McDonald-McGinn^{10,11} · Raquel E. Gur¹² · Bernice E. Morrow¹³ · Ann Swillen^{1,14} · Jacob A. S. Vorstman^{15,16,17} · Carrie E. Bearden¹⁸ · Eva W. C. Chow^{5,17} · Marianne van den Bree⁹ · Beverly S. Emanuel¹¹ · Joris R. Vermeesch¹ · Stephen T. Warren⁸ · Michael J. Owen⁹ · Pankaj Chopra⁸ · David J. Cutler⁸ · Richard Duncan⁸ · Alex V. Kotlar⁸ · Jennifer G. Mulle⁸ · Anna J. Voss⁸ · Michael E. Zwick⁸ · Alexander Diacou¹³ · Aaron Golden¹³ · Tingwei Guo¹³ · Jhih-Rong Lin¹³ · Tao Wang¹⁹ · Zhengdong Zhang¹³ · Yingjie Zhao¹³ · Christian Marshall^{20,21} · Daniele Merico^{2,22} · Andrea Jin¹¹ · Brenna Lilley¹¹ · Harold I. Salmons¹¹ · Oanh Tran¹¹ · Peter Holmans⁹ · Antonio Pardinas⁹ · James T. R. Walters⁹ · Wolfram Demaerel¹ · Erik Boot⁶ · Nancy J. Butcher⁵ · Gregory A. Costain^{5,23} · Chelsea Lowther⁵ · Rens Evers²⁴ · Therese A. M. J. van Amelsvoort²⁴ · Esther van Duin²⁴ · Claudia Vingerhoets²⁴ · Jeroen Breckpot^{1,14} · Koen Devriendt^{1,14} · Elfi Vergaelen¹⁴ · Annick Vogels^{1,14} · T. Blaine Crowley¹¹ · Daniel E. McGinn¹¹ · Edward M. Moss¹¹ · Robert J. Sharkus¹¹ · Marta Unolt¹¹ · Elaine H. Zackai^{10,11} · Monica E. Calkins¹² · Robert S. Gallagher¹² · Ruben C. Gur¹² · Sunny X. Tang¹² · Rosemarie Fritsch²⁵ · Claudia Ornstein²⁵ · Gabriela M. Repetto²⁶ · Elemi Breetvelt^{17,27} · Sasja N. Duijff²⁸ · Ania Fiksinski^{5,29} · Hayley Moss⁹ · Maria Niarchou⁹ · Kieran C. Murphy³⁰ · Sarah E. Prasad³⁰ · Eileen M. Daly³¹ · Maria Gudbrandsen³¹ · Clodagh M. Murphy³¹ · Declan G. Murphy³¹ · Antonio Buzzanca³² · Fabio Di Fabio³² · Maria C. Digilio³³ · Maria Pontillo³⁴ · Bruno Marino³⁵ · Stefano Vicari³⁴ · Karlene Coleman⁸ · Joseph F. Cubells^{8,36} · Opal Y. Ousley³⁶ · Miri Carmel^{37,38} · Doron Gothelf^{38,39} · Ehud Mekori-Domachevsky^{38,39} · Elena Michaelovsky^{37,38} · Ronnie Weinberger³⁹ · Abraham Weizman^{37,38,40} · Leila Kushan¹⁸ · Maria Jalbrzikowski⁴¹ · Marco Armando⁴² · Stéphan Eliez⁴² · Corrado Sandini⁴² · Maude Schneider⁴² · Frédérique Sloan Béna⁴³ · Kevin M. Antshel⁴⁴ · Wanda Fremont⁴⁵ · Wendy R. Kates⁴⁵ · Raoul Belzeaux⁴⁶ · Tiffany Busa⁴⁷ · Nicole Philip⁴⁸ · Linda E. Campbell⁴⁹ · Kathryn L. McCabe^{49,50} · Stephen R. Hooper⁵¹ · Kelly Schoch⁵² · Vandana Shashi⁵² · Tony J. Simon⁵³ · Flora Tassone⁵⁴ · Celso Arango⁵⁵ · David Fraguas⁵⁵ · Sixto García-Miñaur⁵⁶ · Jaume Morey-Canyelles⁵⁷ · Jordi Rosell⁵⁷ · Damià H. Suñer⁵⁸ · Jasna Raventos-Simic⁵⁷ · International 22q11.2DS Brain and Behavior Consortium · Michael P. Epstein⁸ · Nigel M. Williams⁹ · Anne S. Bassett^{5,6,17}

¹ Department of Human Genetics, KU Leuven, Leuven, Belgium

² The Centre for Applied Genomics (TCAG), The Hospital for Sick Children, Toronto, ON, Canada

³ Department of Pediatrics, University of Cincinnati, Cincinnati, OH, USA

⁴ Division of Human Genetics, Cincinnati Children's Hospital Medical Center, Cincinnati, OH, USA

⁵ Clinical Genetics Research Program, Centre for Addiction and Mental Health, Toronto, ON, Canada

⁶ Dalglish Family 22q Clinic, Toronto General Hospital, University Health Network, Toronto, ON, Canada

⁷ Department of Epidemiology, Emory University, Atlanta, GA, USA

⁸ Department of Human Genetics, Emory University School of Medicine, Atlanta, GA, USA

⁹ MRC Centre for Neuropsychiatric Genetics and Genomics, Division of Psychological Medicine and Clinical Neurosciences, School of Medicine, Cardiff University, Cardiff, UK

¹⁰ Department of Pediatrics, Perelman School of Medicine of the University of Pennsylvania, Philadelphia, PA, USA

¹¹ Division of Human Genetics and 22q and You Center, the Children's Hospital of Philadelphia, Philadelphia, PA, USA

¹² Department of Psychiatry and Lifespan Brain Institute, Penn

Medicine—CHOP, University of Pennsylvania, Philadelphia, PA, USA

¹³ Department of Genetics, Albert Einstein College of Medicine, Bronx, NY, USA

¹⁴ Center for Human Genetics, University Hospitals Leuven, Leuven, Belgium

¹⁵ Children's Hospital of Philadelphia, Philadelphia, PA, USA

¹⁶ Department of Psychiatry, University Medical Center Utrecht, Utrecht, The Netherlands

¹⁷ Department of Psychiatry, University of Toronto, Toronto, ON, Canada

¹⁸ Departments of Psychiatry and Biobehavioral Sciences and Psychology, Semel Institute for Neuroscience and Human Behavior, University of California, Los Angeles, CA, USA

¹⁹ Department of Epidemiology & Population Health, Albert Einstein College of Medicine, Bronx, NY, USA

²⁰ Department of Laboratory Medicine and Pathobiology, University of Toronto, Toronto, ON, Canada

²¹ Division of Genome Diagnostics, Department of Paediatric Laboratory Medicine, The Hospital for Sick Children, Toronto, ON, Canada

²² Deep Genomics Inc., Toronto, ON, Canada

²³ Hospital for Sick Children, Toronto, ON, Canada

- 24 School for Mental Health and Neuroscience, Maastricht University, Maastricht, The Netherlands
- 25 Universidad de Chile, Santiago, Chile
- 26 Clinica Alemana Universidad del Desarrollo, Santiago, Chile
- 27 Department of Psychiatry, Hospital for Sick Children, Toronto, ON, Canada
- 28 Department of Pediatrics, University Medical Center Utrecht, Utrecht, Netherlands
- 29 Brain Center Rudolf Magnus, University Medical Center Utrecht, Utrecht, The Netherlands
- 30 Royal College of Surgeons in Ireland, Dublin, Ireland
- 31 Department of Forensic and Neurodevelopmental Sciences, Institute of Psychiatry, Psychology & Neuroscience (IoPPN), King's College London, London, UK
- 32 Department of Human Neurosciences, University Sapienza of Rome, Rome, Italy
- 33 Ospedale Bambino Gesù Pediatric Hospital, Rome, Italy
- 34 Child and Adolescence Neuropsychiatry Unit, Department of Neuroscience, IRCSS Bambino Gesù Children's Hospital of Rome, Rome, Italy
- 35 Sapienza University, Rome, Italy
- 36 Department of Psychiatry and Behavioral Sciences, Emory University School of Medicine, Atlanta, GA, USA
- 37 Felsenstein Medical Research Center, Petach Tikva, Israel
- 38 Sackler Faculty of Medicine, Tel Aviv University, Tel Aviv, Israel
- 39 The Child Psychiatry Division, Edmond and Lily Safra Children's Hospital, Sheba Medical Center, Tel Hashomer, Israel
- 40 Geha Mental Health Center, Petach Tikva, Israel
- 41 Department of Psychiatry, University of Pittsburgh School of Medicine, Pittsburgh, PA, USA
- 42 Developmental Imaging and Psychopathology, Department of Psychiatry, University of Geneva, Geneva, Switzerland
- 43 Department of Medical Genetics, Geneva University Hospitals, Geneva, Switzerland
- 44 Department of Psychology, Syracuse University, Syracuse, NY, USA
- 45 Department of Psychiatry and Behavioral Sciences, SUNY Upstate Medical University, Syracuse, NY, USA
- 46 Pôle de psychiatrie, Hopital Sainte Marguerite, Batiment Solaris, APHM, Marseille, France
- 47 Departement de Genetique Medicale Hôpital d'Enfants de la Timone, APHM, Marseille, France
- 48 Departement de Genetique Medicale Aix Marseille Univ, INSERM, GMGF, APHM, Marseille, France
- 49 University of Newcastle, Callaghan, Australia
- 50 University of California Davis, Davis, CA, USA
- 51 Department of Allied Health Sciences, School of Medicine, University of North Carolina-Chapel Hill, Chapel Hill, NC, USA
- 52 Department of Pediatrics, Division of Medical Genetics, Duke University School of Medicine, Durham, NC, USA
- 53 MIND Institute and Department of Psychiatry and Behavioral Sciences, University of California Davis, Davis, CA, USA
- 54 Department of Microbiology and Molecular Medicine, University of California Davis, Davis, CA, USA
- 55 Department of Child and Adolescent Psychiatry, Hospital General Universitario Gregorio Marañón, IiSGM, CIBERSAM, School of Medicine, Universidad Complutense, Madrid, Spain
- 56 Institute of Medical and Molecular Genetics (INGEMM), La Paz University Hospital, Madrid, Spain
- 57 Hospital Universitari Son Espases, Palma, Spain
- 58 Laboratorio Unidad de Diagnóstico Molecular y Genética Clínica, Hospital Universitari Son Espases, Palma de Mallorca, Spain