

Variations in management of A3 and A4 cervical spine fractures as designated by the AO Spine Subaxial Injury Classification System

Barry Ting Sheen Kweh, MBBS (Hons),^{1–3} Jin Wee Tee, BMedSci, MBBS, MD, FRACS,^{1,2,4}
Sander Muijs, MD, PhD,⁵ F. Cumhur Oner, MD, PhD,⁵ Klaus John Schnake, MD,⁶
Lorin Michael Benneker, MD, PhD,⁷ Emiliano Neves Vialle, MD, MSc,⁸ Frank Kanziora, MD, PhD,⁹
Shanmuganathan Rajasekaran, MCh, PhD, FRCS,¹⁰ Gregory Schroeder, MD,¹¹
Alexander R. Vaccaro, MD, PhD,¹¹ and the AO Spine Subaxial Injury Classification System
Validation Group

¹National Trauma Research Institute, Melbourne, Victoria; ²Department of Neurosurgery, The Alfred Hospital, Melbourne, Victoria; ³Department of Neurosurgery, Royal Melbourne Hospital, Parkville, Melbourne, Victoria; ⁴Central Clinical School, Faculty of Medicine, Nursing and Health Sciences, Monash University, Melbourne, Victoria, Australia; ⁵Department of Orthopaedics, University Medical Center Utrecht, The Netherlands; ⁶Center for Spinal Surgery, Schön Klinik Nürnberg Fürth, Germany; ⁷Sonnenhofspital Bern, University of Bern, Switzerland; ⁸Spine Surgery Group, Catholic University of Parana, Curitiba, Brazil; ⁹Center for Spine Surgery and Neurotraumatology, Frankfurt, Germany; ¹⁰Department of Orthopaedic and Spine Surgery, Ganga Hospital, Coimbatore, India; and ¹¹The Rothman Institute at Thomas Jefferson University, Philadelphia, Pennsylvania

OBJECTIVE Optimal management of A3 and A4 cervical spine fractures, as defined by the AO Spine Subaxial Injury Classification System, remains controversial. The objectives of this study were to determine whether significant management variations exist with respect to 1) fracture location across the upper, middle, and lower subaxial cervical spine and 2) geographic region, experience, or specialty.

METHODS A survey was internationally distributed to 272 AO Spine members across six geographic regions (North America, South America, Europe, Africa, Asia, and the Middle East). Participants' management of A3 and A4 subaxial cervical fractures across cervical regions was assessed in four clinical scenarios. Key characteristics considered in the vignettes included degree of neurological deficit, pain severity, cervical spine stability, presence of comorbidities, and fitness for surgery. Respondents were also directly asked about their preferences for operative management and malalignment acceptance across the subaxial cervical spine.

RESULTS In total, 155 (57.0%) participants completed the survey. Pooled analysis demonstrated that surgeons were more likely to offer operative intervention for both A3 ($p < 0.001$) and A4 ($p < 0.001$) fractures located at the cervicothoracic junction compared with fractures at the upper or middle subaxial cervical regions. There were no significant variations in management for junctional incomplete ($p = 0.116$) or complete ($p = 0.342$) burst fractures between geographic regions. Surgeons with more than 10 years of experience were more likely to operatively manage A3 ($p < 0.001$) and A4 ($p < 0.001$) fractures than their younger counterparts. Neurosurgeons were more likely to offer surgical stabilization of A3 ($p < 0.001$) and A4 ($p < 0.001$) fractures than their orthopedic colleagues. Clinicians from both specialties agreed regarding their preference for fixation of lower junctional A3 ($p = 0.866$) and A4 ($p = 0.368$) fractures. Overall, surgical fixation was recommended more often for A4 than A3 fractures in all four scenarios ($p < 0.001$).

CONCLUSIONS The subaxial cervical spine should not be considered a single unified entity. Both A3 and A4 fracture subtypes were more likely to be surgically managed at the cervicothoracic junction than the upper or middle subaxial cervical regions. The authors also determined that treatment strategies for A3 and A4 subaxial cervical spine fractures

ABBREVIATIONS SLIC = Subaxial Cervical Spine Injury Classification; VAS = visual analog scale.

SUBMITTED November 10, 2020. **ACCEPTED** March 8, 2021.

INCLUDE WHEN CITING Published online September 10, 2021; DOI: 10.3171/2021.3.SPINE201997.

varied significantly, with the latter demonstrating a greater likelihood of operative management. These findings should be reflected in future subaxial cervical spine trauma algorithms.

<https://thejns.org/doi/abs/10.3171/2021.3.SPINE201997>

KEYWORDS burst; fracture; junctional; subaxial cervical spine; variation; trauma

CERVICAL spine fracture occurs in 2.4% of trauma patients and has the potential to cause devastating neurological sequelae.¹ The subaxial cervical spine is affected in more than 65% of patients. In particular, the lower junctional region, as the transitional point between the mobile lordotic cervical spine and rigid kyphotic thoracic spine, tends to be preferentially injured.^{1,2} Indeed, fractures of the lower two cervical vertebrae (C6 and C7) constitute as many as 55% of all cervical fractures.¹⁻³ Despite this unequal distribution of injuries, which suggests that the junctional region is at greater risk for instability, the subaxial region is still perceived as a single entity by multiple contemporary classification systems.⁴⁻⁶

The current Subaxial Cervical Spine Injury Classification (SLIC) System recommends operative or nonoperative intervention on the basis of fracture pattern, integrity of the discoligamentous complex, and neurological state^{8,9} but fails to differentiate different forms of burst fracture.^{8,10} Conversely, the AO Spine Subaxial Injury Classification System does recognize incomplete (A3) and complete (A4) burst fracture morphologies and introduces fracture patterns to reflect their perceived stability in a graded fashion. However, neither classification system takes into account the level of injury across the subaxial cervical spine.⁸ To guide the formation of a novel subaxial cervical spine trauma algorithm, the international variations in management of A3 and A4 fractures were investigated.

The principal aim of our study was to determine whether worldwide management preferences of incomplete and complete cervical burst fractures differ across the upper, middle, and lower subaxial cervical regions. We hypothesized that surgeons would be more likely to recommend operative management for fractures of the lower subaxial cervical spine involving the cervicothoracic junction, as well as those of a complete burst fracture morphology. These would represent crucial findings in guiding future prospective trials and treatment algorithms given the paucity of high-quality evidence available. A universally applicable and accepted treatment algorithm has the potential to greatly streamline and improve the worldwide standard of spine trauma care.⁷

Methods

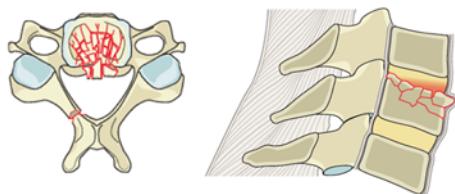
Data Collection

A 43-point survey was globally distributed to 272 AO Spine members across six distinct geographic regions. These 272 participants were volunteers from the approximately 6500 members of the AO Spine community who expressed interest in validating a new subaxial cervical spine trauma algorithm. Participant demographic characteristics, such as years of experience, specialty, and geographic region of practice, were collected. The survey assessed clinician management preferences for subaxial cervical fractures at different cervical regions, both directly with discrete questioning and indirectly through various clinical scenarios. Surgeons were presented with four clinical vignettes involving A3 or A4 subaxial cervical fracture (Fig. 1). The hypothetical patients sustained injury to either the upper subaxial region as represented by a C3 fracture, middle level as illustrated by a C5 fracture, or the lower cervicothoracic junctional area as characterized by a C7 fracture. Participants expressed their treatment plan across the subaxial cervical regions in the context of several variables, such as degree of pain as measured with the visual analog scale (VAS) and extent of medical comorbidities. Significant medical comorbidity was defined as American Society of Anesthesiologists physical status classification score 3 or higher.¹² Bias due to differing radiological interpretations of fracture morphologies was circumvented by the use of written clinical vignettes. The primary outcome was management preferences for surgery or rigid orthosis in the treatment of A3 and A4 cervical fractures across the upper, middle, and lower subaxial regions. Secondary outcome measures were variations in management according to experience, geographic region, and specialty.

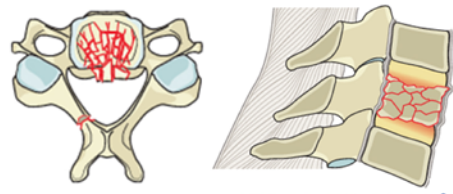
Statistical Analysis

All partial and complete responses to the survey were included in the analysis by using a simple random sampling scheme. Baseline continuous demographic characteristics were analyzed according to their mean, median,

A3 – Incomplete Burst



A4 – Complete Burst



© AO Foundation, AO Spine, Switzerland AO

FIG. 1. A3 incomplete burst fracture involves a single endplate, whereas A4 complete burst fracture involves both endplates.¹¹ Copyright AO Spine, AO Foundation. Published with permission. Figure is available in color online only.

or interquartile range. Categorical data were analyzed according to absolute frequency and percentage of complete responses. The chi-square test or Fisher's exact test was used to analyze differences between categorical parameters, whereas the Cochran-Armitage test was used to assess for trends. Owing to underrepresentation of participants from the six different geographical regions, regions with a low number of participants were combined with their closest neighboring geographic region. The likelihood that a surgeon would offer operative intervention for A4 fracture compared with A3 fracture was also investigated by using ORs with 95% CIs. The statistical significance level was defined as $p < 0.05$. All statistical analysis was performed with SAS version 9.4 (SAS Institute Inc.).

Results

A total of 155 (57.0%) responses from specialists in six geographic regions were received. Baseline demographic characteristics are summarized in Table 1. Importantly, almost half the respondents worked in an academic center (49.7%), with a mean of 106.0 spine trauma patients treated per year.

Management Preferences for A3 and A4 Subaxial Cervical Spine Fractures

When confronted with incomplete burst fractures consistent with the A3 subtype of the AO Spine Subaxial Injury Classification System, surgeons expressed a significantly increased preference for surgical management in all four scenarios if injuries were located at the lower cervicothoracic junction (Table 2). This was true for patients who were neurologically intact, otherwise medically fit, and had minimal pain ($p < 0.001$), and even for those who had significant comorbidities ($p = 0.002$). In the cohort of patients who had significant pain but were otherwise appropriate for surgical intervention, surgeons were again more likely to recommend operative management for inferior junctional fractures at the lower subaxial region than those located at the upper or middle subaxial cervical regions ($p = 0.004$). Patients with a notable degree of pain and comorbidities also demonstrated a significant trend toward undergoing operative intervention if their injuries were located at the lower junctional region ($p = 0.024$). Pooled analysis of all four scenarios was consistent with this tenet of preferential management of cervicothoracic junctional A3 fracture with surgical fixation rather than rigid orthosis ($p < 0.001$) compared with more superiorly located injuries.

A complete A4 burst fracture was also more likely to be managed operatively than its less severe A3 counterpart. Regardless of whether various key characteristics were altered, including degree of pain and presence of significant comorbidities, surgical intervention was preferred if the fracture was located at the cervicothoracic junction (Table 2). Although the individual scenarios failed to demonstrate a statistically significant difference in management of junctional A4 fractures, likely confounded by the overwhelming preference for surgical management of complete burst injuries in general, the pooled analysis confirmed that junctional complete burst fractures are

TABLE 1. Demographic characteristics of the 155 AO Spine members who completed the internationally distributed survey

Characteristic	Value
Subspecialty	
Orthopedics	96 (61.9)
Neurosurgery	52 (33.5)
Other	7 (4.5)
Geographic region	
Europe	48 (31.0)
Latin & South America	40 (25.8)
Asia	29 (18.7)
North America	17 (11.0)
Middle East	13 (8.4)
Africa	8 (5.2)
Years in practice	
<5	27 (17.4)
5–10	52 (33.5)
11–20	50 (32.3)
>20	26 (16.8)
Work setting	
Academic	77 (49.7)
Hospital	54 (34.8)
Private practice	24 (15.5)
Treated spine trauma patients, no./yr	
Mean	106.0
Median	50.0 (20–100)
1–25	43 (27.7)
26–100	87 (56.1)
>100	25 (16.1)

Values are shown as number (percent) or median (interquartile range).

preferentially treated with operative intervention compared with those fractures in the upper or middle cervical regions ($p < 0.001$).

Preferences According to Experience, Geographic Region, and Specialty

To determine whether degree of experience affected management of A3 and A4 fractures across the subaxial cervical spine, the cohort was dichotomized according to a threshold of 10 years of experience (Table 3). Interestingly, experienced surgeons tended to prefer surgery rather than rigid orthosis in comparison with their younger colleagues in the management of both incomplete burst (39.9% vs 28.0%, $p < 0.001$) and complete burst (75.9% vs 64.3%, $p < 0.001$) fractures across the entire subaxial cervical spine. Furthermore, there were no significant global differences in likelihood of offering operative intervention for single- or dual-endplate fractures across the individual four scenarios (Table 4). On pooled analysis, European surgeons were less inclined to favor operative management for A3 fracture compared with their American and Asian counterparts ($p = 0.019$). Overall, there was no significant regional variation in the management of A4 frac-

TABLE 2. Management preferences for A3 and A4 subaxial cervical spine fractures, stratified by upper, middle, and lower cervical regions

Subaxial Cervical Spine Level	A3 Fracture Management Strategy			A4 Fracture Management Strategy		
	Surgery (n [%])	Rigid Orthosis (n [%])	p Value	Surgery (n [%])	Rigid Orthosis (n [%])	p Value*
Scenario 1†						
Upper	34 (21.9)	121 (78.1)	<0.001	104 (67.5)	50 (32.5)	0.165
Middle	43 (27.9)	111 (72.1)		111 (72.1)	43 (27.9)	
Lower	61 (39.6)	93 (60.4)		115 (74.7)	39 (25.3)	
Scenario 2‡						
Upper	20 (13.0)	134 (87.0)	0.002	73 (47.4)	81 (52.6)	0.022
Middle	22 (14.3)	132 (85.7)		87 (56.5)	67 (43.5)	
Lower	41 (26.6)	113 (73.4)		93 (60.4)	61 (39.6)	
Scenario 3§						
Upper	66 (43.1)	87 (56.9)	0.004	123 (80.4)	30 (19.6)	0.162
Middle	78 (51.0)	75 (49.0)		130 (85.0)	23 (15.0)	
Lower	91 (59.5)	62 (40.5)		132 (86.3)	21 (13.7)	
Scenario 4¶						
Upper	49 (32.0)	104 (68.0)	0.024	97 (63.4)	56 (36.6)	0.018
Middle	52 (34.0)	101 (66.0)		109 (71.2)	44 (28.8)	
Lower	68 (44.4)	85 (55.6)		116 (75.8)	37 (24.2)	
Pooled analysis						
Upper	169 (27.5)	446 (72.5)	<0.001	397 (64.7)	217 (35.3)	<0.001
Middle	195 (31.8)	419 (68.2)		437 (71.2)	177 (28.8)	
Lower	261 (42.5)	353 (57.5)		456 (74.3)	158 (25.7)	

Boldface type indicates statistical significance ($p < 0.05$).

* Determined using the Cochran-Armitage trend test.

† Patient without neurological deficits, minimal cervical axial pain (VAS $\leq 4/10$) on mobilization, stable cervical spine, and deemed fit for surgery.

‡ Patient without neurological deficits, minimal cervical axial pain (VAS $\leq 4/10$) on mobilization, stable cervical spine, significant comorbidities, and deemed fit for surgery.

§ Patient without neurological deficits, significant cervical axial pain (VAS $\geq 5/10$) on mobilization, stable cervical spine, and deemed fit for surgery.

¶ Patient without neurological deficits, significant cervical axial pain (VAS $\geq 5/10$) on mobilization, stable cervical spine, significant comorbidities, and deemed fit for surgery.

tures, with the majority of clinicians opting to manage this fracture with surgical intervention rather than rigid orthosis ($p = 0.918$). On the other hand, pooled analysis of all four clinical scenarios revealed that neurosurgeons were more likely to offer operative intervention for A3 (39.9% vs 29.6%, $p < 0.001$) and A4 (76.3% vs 67.5%, $p < 0.001$) fractures compared with their orthopedic colleagues (Table 5). However, spine surgeons from both specialties exhibited similar preferences for operative management of lower junctional A3 (41.3% vs 42.1%, $p = 0.866$) and A4 (76.9% vs 73.5%, $p = 0.368$) fractures.

Misalignment Acceptance Rate

Clinicians accepted significantly different degrees of malalignment across the subaxial cervical spine in the management of A3 and A4 fractures sustained by medically fit, neurologically intact patients ($p = 0.040$). In particular, misalignment was less tolerated at the cervicothoracic junction (61.2% of participants) compared with the middle (47.4%) and upper (44.7%) subaxial cervical regions (Supplementary Table 1). There was no statistically significant difference with respect to the misalignment

acceptance rate, and thus willingness to conservatively manage cervical burst fractures with rigid orthosis rather than surgical fixation, when stratified according to years of experience or geographic region of practice (Supplementary Tables 2 and 3). However, compared with their neurosurgical counterparts, orthopedic spine specialists indicated that they had a significantly lower tolerance of misalignment of A3 injuries compared with A4 injuries ($p = 0.046$). Despite this, there was no difference between the two specialties with respect to management of A3 or A4 fractures across the subaxial cervical spine (Supplementary Table 4).

AO Spine Subaxial Injury Classification System

This survey also provided unique insight into clinician management preferences for incomplete and complete burst fractures without radiological interpretation as a confounder. Surgeons overwhelmingly preferred operative fixation for the management of A4 fractures compared with A3 injuries in all four scenarios throughout the subaxial cervical spine (Table 6). This is consistent with the logical and graduated manner in which the AO Spine

TABLE 3. Participants who preferred surgical management for A3 and A4 subaxial cervical spine fractures, stratified by surgeon experience

Subaxial Cervical Spine Level	Preference for Surgery, Stratified by Experience		p Value
	≤10 yrs (n = 79)	>10 yrs (n = 76)	
Scenario 1*			
A3			
Upper	14 (17.7)	20 (26.3)	0.196
Middle	15 (19.2)	28 (36.8)	0.015
Lower	21 (26.9)	40 (52.6)	0.001
Overall	50 (21.1)	88 (38.6)	<0.001
A4			
Upper	49 (62.8)	55 (72.4)	0.206
Middle	52 (66.7)	59 (77.6)	0.129
Lower	52 (66.7)	63 (82.9)	0.021
Overall	153 (65.4)	177 (77.6)	0.004
Scenario 2†			
A3			
Upper	8 (10.3)	12 (15.8)	0.307
Middle	8 (10.3)	14 (18.4)	0.148
Lower	16 (20.5)	25 (32.9)	0.082
Overall	32 (13.7)	51 (22.4)	0.015
A4			
Upper	35 (44.9)	38 (50.0)	0.524
Middle	38 (48.7)	49 (64.5)	0.049
Lower	40 (51.3)	53 (69.7)	0.019
Overall	113 (48.3)	140 (61.4)	0.005
Scenario 3‡			
A3			
Upper	29 (37.7)	37 (48.7)	0.169
Middle	33 (42.9)	45 (59.2)	0.043
Lower	40 (51.9)	51 (67.1)	0.056
Overall	102 (44.2)	133 (58.3)	0.002
A4			
Upper	57 (74.0)	66 (86.8)	0.046
Middle	62 (80.5)	68 (89.5)	0.121
Lower	62 (80.5)	70 (92.1)	0.037
Overall	181 (78.4)	204 (89.5)	0.001
Scenario 4§			
A3			
Upper	23 (29.9)	26 (34.2)	0.565
Middle	23 (29.9)	29 (38.2)	0.279
Lower	31 (40.3)	37 (48.7)	0.294
Overall	77 (33.3)	92 (40.4)	0.119
A4			
Upper	47 (61.0)	50 (65.8)	0.542
Middle	50 (64.9)	59 (77.6)	0.083
Lower	54 (70.1)	62 (81.6)	0.098
Overall	151 (65.4)	171 (75.0)	0.024

CONTINUED IN NEXT COLUMN »

» CONTINUED FROM PREVIOUS COLUMN

TABLE 3. Participants who preferred surgical management for A3 and A4 subaxial cervical spine fractures, stratified by surgeon experience

Subaxial Cervical Spine Level	Preference for Surgery, Stratified by Experience		p Value
	≤10 yrs (n = 79)	>10 yrs (n = 76)	
Pooled analysis			
A3			
Upper	74 (23.8)	95 (31.3)	0.038
Middle	79 (25.5)	116 (38.2)	<0.001
Lower	108 (34.8)	153 (50.3)	<0.001
Overall	261 (28.0)	364 (39.9)	<0.001
A4			
Upper	188 (60.6)	209 (68.8)	0.036
Middle	202 (65.2)	235 (77.3)	<0.001
Lower	208 (67.1)	248 (81.6)	<0.001
Overall	598 (64.3)	692 (75.9)	<0.001

Boldface type indicates statistical significance ($p < 0.05$). Values are shown as number (percent) unless indicated otherwise.

* Patient without neurological deficits, minimal cervical axial pain (VAS ≤ 4/10) on mobilization, stable cervical spine, and deemed fit for surgery.

† Patient without neurological deficits, minimal cervical axial pain (VAS ≤ 4/10) on mobilization, stable cervical spine, significant comorbidities, and deemed fit for surgery.

‡ Patient without neurological deficits, significant cervical axial pain (VAS ≥ 5/10) on mobilization, stable cervical spine, and deemed fit for surgery.

§ Patient without neurological deficits, significant cervical axial pain (VAS ≥ 5/10) on mobilization, stable cervical spine, significant comorbidities, and deemed fit for surgery.

Subaxial Injury Classification System introduces fracture patterns from least to most severe. In neurologically intact patients with minimal cervical pain (VAS ≤ 4/10) on mobilization who were deemed fit for surgery, A4 fractures were more likely to be treated with operative intervention than A3 fractures in the upper (OR 7.40, 95% CI 4.45–12.31, $p < 0.001$), middle (OR 6.66, 95% CI 4.05–10.96, $p < 0.001$), and lower (OR 4.50, 95% CI 2.77–7.31, $p < 0.001$) cervical regions.

Similar findings were also observed in patients with significant comorbidities. Complete burst fractures were again more likely to be managed surgically than incomplete burst fractures in the upper (OR 6.04, 95% CI 3.43–10.64, $p < 0.001$), middle (OR 7.79, 95% CI 4.48–13.54, $p < 0.001$), and lower (OR 4.20, 95% CI 2.60–6.80, $p < 0.001$) subaxial regions. Once again, patients with A3 junctional fractures in the lower subaxial spine were also more likely to be offered intervention than patients with similar fractures elsewhere. When significant pain (VAS ≥ 5/10) was introduced into preoperative decision-making, surgeons were again more likely to recommend surgical fixation for A4 fractures than A3 fractures across the upper (OR 5.40, 95% CI 3.24–9.01, $p < 0.001$), middle (OR 5.43, 95% CI 3.15–9.37, $p < 0.001$), and lower (OR 4.28, 95% CI 2.44–7.51, $p < 0.001$) subaxial regions. Consistent with previous scenarios, cervicothoracic junctional A3 fractures were

TABLE 4. Participants who preferred surgical management for A3 and A4 subaxial cervical spine fractures, stratified by geographic region

Subaxial Cervical Spine Level	Preference for Surgery, Stratified by Region			p Value
	North, Latin, & South America (n = 57)	Europe (n = 48)	Africa, Asia, & the Middle East (n = 50)	
Scenario 1*				
A3				
Upper	14 (24.6)	9 (18.8)	11 (22.0)	0.773
Middle	17 (29.8)	10 (20.8)	16 (32.7)	0.397
Lower	23 (40.4)	17 (35.4)	21 (42.9)	0.748
Overall	54 (31.6)	36 (25.0)	48 (32.4)	0.311
A4				
Upper	38 (66.7)	35 (72.9)	31 (63.3)	0.588
Middle	38 (66.7)	38 (79.2)	35 (71.4)	0.361
Lower	42 (73.7)	39 (81.3)	34 (69.4)	0.396
Overall	118 (69.0)	112 (77.8)	100 (68.0)	0.124
Scenario 2†				
A3				
Upper	10 (17.5)	5 (10.4)	5 (10.2)	0.435
Middle	11 (19.3)	4 (8.3)	7 (14.3)	0.278
Lower	19 (33.3)	9 (18.8)	13 (26.5)	0.242
Overall	40 (23.4)	18 (12.5)	25 (17.0)	0.040
A4				
Upper	30 (52.6)	23 (47.9)	20 (40.8)	0.477
Middle	32 (56.1)	27 (56.3)	28 (57.1)	0.994
Lower	36 (63.2)	31 (64.6)	26 (53.1)	0.441
Overall	98 (57.3)	81 (56.3)	74 (50.3)	0.420
Scenario 3‡				
A3				
Upper	25 (43.9)	20 (41.7)	21 (43.8)	0.970
Middle	27 (47.4)	24 (50.0)	27 (56.3)	0.654
Lower	35 (61.4)	28 (58.3)	28 (58.3)	0.933
Overall	87 (50.9)	72 (50.0)	76 (52.8)	0.890
A4				
Upper	46 (80.7)	36 (75.0)	41 (85.4)	0.437
Middle	47 (82.5)	40 (83.3)	43 (89.6)	0.554
Lower	51 (89.5)	41 (85.4)	40 (83.3)	0.646
Overall	144 (84.2)	117 (81.3)	124 (86.1)	0.527
Scenario 4§				
A3				
Upper	20 (35.1)	14 (29.2)	15 (31.3)	0.803
Middle	20 (35.1)	13 (27.1)	19 (39.6)	0.423
Lower	28 (49.1)	16 (33.3)	24 (50.0)	0.173
Overall	68 (39.8)	43 (29.9)	58 (40.3)	0.112
A4				
Upper	38 (66.7)	29 (60.4)	30 (62.5)	0.181
Middle	38 (66.7)	32 (66.7)	39 (81.3)	0.181
Lower	46 (80.7)	33 (68.8)	37 (77.1)	0.352
Overall	122 (71.3)	94 (65.3)	106 (73.6)	0.276

CONTINUED ON PAGE 105 »

» CONTINUED FROM PAGE 104

TABLE 4. Participants who preferred surgical management for A3 and A4 subaxial cervical spine fractures, stratified by geographic region

Subaxial Cervical Spine Level	Preference for Surgery, Stratified by Region			p Value
	North, Latin, & South America (n = 57)	Europe (n = 48)	Africa, Asia, & the Middle East (n = 50)	
Pooled analysis				
A3				
Upper	69 (30.3)	48 (25.0)	52 (26.7)	0.462
Middle	75 (32.9)	51 (26.6)	69 (35.6)	0.148
Lower	105 (46.1)	70 (36.5)	86 (44.3)	0.116
Overall	249 (36.4)	169 (29.3)	207 (35.5)	0.019
A4				
Upper	152 (66.7)	123 (64.1)	122 (62.9)	0.705
Middle	155 (68.0)	137 (71.4)	145 (74.7)	0.311
Lower	175 (76.8)	144 (75.0)	137 (70.6)	0.342
Overall	482 (70.5)	404 (70.1)	404 (69.4)	0.918

Boldface type indicates statistical significance ($p < 0.05$). Values are shown as number (percent) unless indicated otherwise.

* Patient without neurological deficits, minimal cervical axial pain (VAS $\leq 4/10$) on mobilization, stable cervical spine, and deemed fit for surgery.

† Patient without neurological deficits, minimal cervical axial pain (VAS $\leq 4/10$) on mobilization, stable cervical spine, significant comorbidities, and deemed fit for surgery.

‡ Patient without neurological deficits, significant cervical axial pain (VAS $\geq 5/10$) on mobilization, stable cervical spine, and deemed fit for surgery.

§ Patient without neurological deficits, significant cervical axial pain (VAS $\geq 5/10$) on mobilization, stable cervical spine, significant comorbidities, and deemed fit for surgery.

also more likely to be operatively managed than those located elsewhere.

Finally, complex surgical decision-making was interrogated with challenging clinical vignettes in which perioperative risk of comorbidities needed to be weighed against the benefits of operative intervention such as spinal stability and analgesic effect. In this instance, the AO Spine Subaxial Injury Classification System held true, with A4 fractures more likely to be deemed suitable for operative management at every cervical region. Importantly, there was less management variation at C3 (OR 3.68, 95% CI 2.29–5.90, $p < 0.001$) and C7 (OR 3.92, 95% CI 2.40–6.39, $p < 0.001$) than for fractures located in the middle location (OR 4.81, 2.96–7.81, $p < 0.001$). In other words, this scenario indirectly demonstrates that surgeons were more likely to surgically manage A3 fractures at the lower cervicothoracic junction than those at the upper or middle subaxial regions.

Discussion

Traumatic spine injury in the cervical region results in the highest rate of complete motor and sensory neurological deficit.¹³ Although the considerable range of motion afforded by the cervical's spine reliance upon ligamentous structures rather than bony stability is a functional advantage, it simultaneously confers a particular susceptibility to injury and instability.^{14–16} In turn, this leads to a significant risk of morbidity and mortality given the potential for high spinal cord injury and permanent neurological deficit.^{14–16}

As such, there are ongoing international efforts to formulate both a universal classification system and accepted treatment algorithm.^{8,17–19} Our survey addresses both these subjects. We determined that junctional subaxial cervical region fractures are more likely to be operatively managed, and also that the AO Spine Subaxial Injury Classification System represents a logical progression of injury morphology because A4 fractures were more likely to be surgically stabilized than A3 fractures.²⁰

There is an unequal distribution of dislocations and fractures across the subaxial cervical spine, with as many as 90% of fractures occurring in the middle and lower regions.^{1,21} As the transitional point between the comparatively mobile lordotic cervical spine and the more rigid kyphotic thoracic spine, the cervicothoracic junction is especially vulnerable to mechanical instability and disruption.^{22,23} Fractures affecting the lower two cervical vertebra (C6 and C7) have been estimated to constitute between 39% and 55% of all cervical fractures.^{1–3} More specifically, the C6–7 level is the most commonly fractured level of the subaxial cervical spine (21.2%).²⁴ This is closely followed by fracture of C7 or dislocation at the C7/T1 junction, which account for 17% of all injuries.²⁵ Quarrington et al. also found that the C6–7 level was the most commonly involved level for facet dislocation.²⁶ This pattern of fractures and dislocations that preferentially occur in the lower subaxial spine reflects this region's increased vulnerability to injury. The results of our worldwide survey are consistent with this tenet.

TABLE 5. Participants who preferred surgical management for A3 and A4 subaxial cervical spine fractures, stratified by surgical specialty

Subaxial Cervical Spine Level	Preference for Surgery, Stratified by Specialty		p Value
	Orthopedics (n = 96)	Neurosurgery (n = 52)	
Scenario 1*			
A3			
Upper	17 (17.7)	14 (26.9)	0.189
Middle	22 (23.2)	19 (36.5)	0.084
Lower	40 (42.1)	17 (32.7)	0.263
Overall	79 (27.6)	50 (32.1)	0.328
A4			
Upper	62 (65.3)	39 (75.0)	0.224
Middle	67 (70.5)	41 (78.8)	0.275
Lower	70 (73.7)	41 (78.8)	0.487
Overall	199 (69.8)	121 (77.6)	0.082
Scenario 2†			
A3			
Upper	10 (10.5)	8 (15.4)	0.390
Middle	10 (10.5)	10 (19.2)	0.141
Lower	26 (27.4)	12 (23.1)	0.570
Overall	46 (16.1)	30 (19.2)	0.411
A4			
Upper	40 (42.1)	30 (57.7)	0.070
Middle	49 (51.6)	35 (67.3)	0.065
Lower	58 (61.1)	32 (61.5)	0.954
Overall	147 (51.6)	97 (62.2)	0.032
Scenario 3‡			
A3			
Upper	32 (34.0)	29 (55.8)	0.011
Middle	40 (42.6)	34 (65.4)	0.008
Lower	53 (56.4)	32 (61.5)	0.545
Overall	125 (44.3)	95 (60.9)	<0.001
A4			
Upper	73 (77.7)	45 (86.5)	0.192
Middle	79 (84.0)	46 (88.5)	0.466
Lower	80 (85.1)	46 (88.5)	0.572
Overall	232 (82.3)	137 (87.8)	0.127
Scenario 4§			
A3			
Upper	22 (23.4)	24 (46.2)	0.005
Middle	24 (25.5)	25 (48.1)	0.006
Lower	40 (42.6)	25 (48.1)	0.520
Overall	86 (30.5)	74 (47.4)	<0.001
A4			
Upper	53 (56.4)	39 (75.0)	0.026
Middle	64 (68.1)	41 (78.8)	0.167
Lower	70 (74.5)	41 (78.8)	0.553
Overall	187 (66.3)	121 (77.6)	0.014

CONTINUED IN NEXT COLUMN »

» CONTINUED FROM PREVIOUS COLUMN

TABLE 5. Participants who preferred surgical management for A3 and A4 subaxial cervical spine fractures, stratified by surgical specialty

Subaxial Cervical Spine Level	Preference for Surgery, Stratified by Specialty		p Value
	Orthopedics (n = 96)	Neurosurgery (n = 52)	
Pooled analysis			
A3			
Upper	81 (21.4)	75 (36.1)	<0.001
Middle	96 (25.4)	88 (42.3)	<0.001
Lower	159 (42.1)	86 (41.3)	0.866
Overall	336 (29.6)	249 (39.9)	<0.001
A4			
Upper	228 (60.3)	153 (73.6)	0.001
Middle	259 (68.5)	163 (78.4)	0.011
Lower	278 (73.5)	160 (76.9)	0.368
Overall	765 (67.5)	476 (76.3)	<0.001

Boldface type indicates statistical significance (p < 0.05). Values are shown as number (percent) unless indicated otherwise.

* Patient without neurological deficits, minimal cervical axial pain (VAS ≤ 4/10) on mobilization, stable cervical spine, and deemed fit for surgery.

† Patient without neurological deficits, minimal cervical axial pain (VAS ≤ 4/10) on mobilization, stable cervical spine, significant comorbidities, and deemed fit for surgery.

‡ Patient without neurological deficits, significant cervical axial pain (VAS ≥ 5/10) on mobilization, stable cervical spine, and deemed fit for surgery.

§ Patient without neurological deficits, significant cervical axial pain (VAS ≥ 5/10) on mobilization, stable cervical spine, significant comorbidities, and deemed fit for surgery.

Indeed, we determined that junctional fractures of both the A3 (p < 0.001) and A4 (p < 0.001) subtypes are more likely to be managed with operative intervention than injuries located elsewhere. Furthermore, the current AO Spine Subaxial Injury Classification System differentiates between incomplete and complete burst fracture morphologies, but it does not take into account the subaxial spine level as a formal discrete category or modifier.⁸ Similarly, the Spine Section of the German Society for Orthopedics and Trauma (DGOU) advocates surgical fixation for complete burst fractures of the subaxial cervical spine, while suggesting that rigid orthosis and close observation may be considered for neurologically intact patients with incomplete burst fracture.²⁷ However, the level of the subaxial cervical fracture is not taken into account by the DGOU algorithm.²⁷ Our novel finding of a consistent global preference for operative intervention for fractures located at the cervicothoracic region, compared with fractures at the upper and middle regional cervical regions, was evident even in patients with significant comorbidities (p = 0.002). As such, we advocate for consideration of inclusion of the level of subaxial cervical spine injury in future classification and treatment algorithms.

Unfortunately, there is a distinct paucity of prospective data that directly compare surgical outcomes after operative and nonoperative management of subaxial cervical

TABLE 6. Management strategies for A3 versus A4 subaxial cervical spine fractures

Subaxial Cervical Spine Level	Management Strategy		OR (95% CI)*	p Value
	Surgery	Rigid Orthosis		
Scenario 1†				
Upper				
A3	34 (21.9)	121 (78.1)	7.40 (4.45–12.31)	<0.001
A4	104 (67.5)	50 (32.5)		
Middle				
A3	43 (27.9)	111 (72.1)	6.66 (4.05–10.96)	<0.001
A4	111 (72.1)	43 (27.9)		
Lower				
A3	61 (39.6)	93 (60.4)	4.50 (2.77–7.31)	<0.001
A4	115 (74.7)	39 (25.3)		
Scenario 2‡				
Upper				
A3	20 (13.0)	134 (87.0)	6.04 (3.43–10.64)	<0.001
A4	73 (47.4)	81 (52.6)		
Middle				
A3	22 (14.3)	132 (85.7)	7.79 (4.48–13.54)	<0.001
A4	87 (56.5)	67 (43.5)		
Lower				
A3	41 (26.6)	113 (73.4)	4.20 (2.60–6.80)	<0.001
A4	93 (60.4)	61 (39.6)		
Scenario 3§				
Upper				
A3	66 (43.1)	87 (56.9)	5.40 (3.24–9.01)	<0.001
A4	123 (80.4)	30 (19.6)		
Middle				
A3	78 (51.0)	75 (49.0)	5.43 (3.15–9.37)	<0.001
A4	130 (85.0)	23 (15.0)		
Lower				
A3	91 (59.5)	62 (40.5)	4.28 (2.44–7.51)	<0.001
A4	132 (86.3)	21 (13.7)		
Scenario 4¶				
Upper				
A3	49 (32.0)	104 (68.0)	3.68 (2.29–5.90)	<0.001
A4	97 (63.4)	56 (36.6)		
Middle				
A3	52 (34.0)	101 (66.0)	4.81 (2.96–7.81)	<0.001
A4	109 (71.2)	44 (28.8)		
Lower				
A3	68 (44.4)	85 (55.6)	3.92 (2.40–6.39)	<0.001
A4	116 (75.8)	37 (24.2)		

Boldface type indicates statistical significance ($p < 0.05$). Values are shown as number (percent) unless indicated otherwise.

* Indicates the likelihood of surgical intervention for A4 fracture compared with A3 fracture.

† Patient without neurological deficits, minimal cervical axial pain (VAS $\leq 4/10$) on mobilization, stable cervical spine, and deemed fit for surgery.

‡ Patient without neurological deficits, minimal cervical axial pain (VAS $\leq 4/10$) on mobilization, stable cervical spine, significant comorbidities, and deemed fit for surgery.

§ Patient without neurological deficits, significant cervical axial pain (VAS $\geq 5/10$) on mobilization, stable cervical spine, and deemed fit for surgery.

¶ Patient without neurological deficits, significant cervical axial pain (VAS $\geq 5/10$) on mobilization, stable cervical spine, significant comorbidities, and deemed fit for surgery.

spine fractures stratified by level of injury. Koivikko et al. examined 69 neurologically intact patients with burst or teardrop fractures who underwent either surgical decompression and stabilization or skull traction and halo bracing.²¹ The operative cohort experienced superior outcomes with respect to improved Frankel grade of neurological status, reduced spinal canal narrowing, and less kyphotic deformity compared with the nonoperative group.²¹ Importantly, 67 of 69 patients had middle and lower cervical fractures (C5–7). Toh et al. and Fisher et al. concurred with the role of surgical intervention for fractures of the middle and lower cervical spine, and they advocated for an anterior rather than posterior or conservative approach owing to superior decompression and overall outcome.^{28,29} Overall, these studies favored operative intervention for the management of lower cervical fracture, which is consistent with the preferences expressed in our global survey. Nonetheless, there is still a need for randomized trials to confirm this apparent treatment benefit.

Numerous treatment algorithms, with varying degrees of usability and reliability, have been proposed to guide clinical decision-making for the management of subaxial cervical spine fracture. The Allen and Ferguson system attempted to classify injuries according to six main mechanisms of injury but is based on findings on plain radiography, which Song et al. argued makes it less applicable today.^{6,30} Likewise, the Harris classification divides subaxial cervical spine injuries into five categories on the basis of mechanism.⁵ On the other hand, the pioneering AO Spine Subaxial Injury Classification System introduced by Vaccaro et al. in 2016 divides injuries into three main categories: type A (compression), type B (distraction), and type C (translation). Each category introduces fracture patterns in a logical graduated manner of increasing severity.⁸ This methodological classification has shown serviceable intra-observer and interobserver reliability for all categories.⁸ Our study provided original compelling evidence that type A4 complete burst fracture is overwhelmingly believed to be more severe than A3 incomplete burst fracture, and thus more likely to be operatively managed irrespective of patient comorbidity status ($p < 0.001$).

This is not to state that the algorithm is beyond refinement. Indeed, others have challenged the reliability of the AO Spine Subaxial Injury Classification System. Silva et al. astutely noted that B type and facet injuries are often poorly distinguished.¹⁸ Only the extremes of injuries, whether minor or severe, were reliably rated while the use of facet modifiers was relatively imprecise and difficult to assess.¹⁸ Hitti et al. also attempted to modify the system by incorporating comorbidities, such as osteoporosis, in an attempt to predict failure of nonoperative treatment.¹⁹ The significance of using modifiers to address additional determinants of stability was addressed by Divi et al., who incorporated important conditions such as ankylosing spondylitis or diffuse idiopathic skeletal hyperostosis into the system.³¹ It is evident that treatment algorithms are continuously evolving. We propose, much like Schleicher et al., that not only does fracture morphology carry importance but also the level of the affected subaxial cervical region.³² Indeed, fracture location at a junctional region has already been incorporated into the validated Spine In-

stability Neoplastic Score as contributing additional points toward instability.³³

The rationale behind developing a subaxial cervical spine algorithm is the sizable morbidity and mortality rate attributed to these devastating fractures. Sokolowski et al. found that the overall acute mortality rate for all patients with cervical spine injury was 5.92%.¹⁶ On subgroup analysis, the elderly population age 65 years or older had an astonishingly high acute mortality rate of 18%.³⁴ Overall, 86% of elderly patients age 65 years and older survived, compared with 96.1% of their younger counterparts. When Lenoir et al. exclusively evaluated patients with unstable fracture of the cervicothoracic junction, they found an even higher mortality rate of 23%. This observed variability in overall survival rate across the subaxial cervical spine was reflected in our international study, which demonstrated that statistically significant variations in management do indeed exist according to the subaxial cervical region affected.³⁵

A criticism that may be leveled against any spine fracture treatment algorithm is its applicability and generalizability. Management preferences may vary according to region and surgeon experience, as well as between surgical specialties. We investigated all of these factors in our global survey. Generally, there were no significant discrepancies in management preferences across the three stratified regions of the Americas, Europe, and finally the combined region of Africa, Asia, and the Middle East. The only noteworthy finding was that European spinal specialists were less inclined to offer surgical management for A3 fractures than their American and Asian colleagues ($p = 0.019$). Misalignment acceptance rates were also similar across geographic regions. This is a testament to the universality of the AO Spine Subaxial Injury Classification System.

From an experiential standpoint, surgeons with more than 10 years of experience were more likely to operatively manage incomplete ($p < 0.001$) and complete ($p < 0.001$) burst fractures than their younger colleagues. It could be argued that there is evidence in the overall surgical population that experienced surgeons may have lower postoperative complication and mortality rates than younger surgeons and therefore we should defer to their experience.³⁶ Alternatively, these better outcomes could be attributed to other factors, such as the experienced surgeon's skillset rather than their decision-making. This is an intriguing finding with potential for further investigations to evaluate postoperative outcomes in this particular population according to surgeon experience.

Finally, neurosurgeons preferred operative intervention for the management of traumatic A3 ($p < 0.001$) and A4 ($p < 0.001$) fractures in comparison with their orthopedic colleagues on pooled analysis. However, it is telling that both groups agreed regarding the management of both A3 ($p = 0.866$) and A4 ($p = 0.368$) junctional fractures in the lower subaxial cervical region, despite offering different treatment strategies for fractures in the upper and middle regions. It has been suggested that neurosurgeons perform a higher overall volume of spinal procedures during their training than orthopedic surgeons, but they do have a reduced focus on spinal deformity surgery.³⁷ The purpose

of highlighting potential intrinsic specialty bias regarding management preferences is to raise self-awareness among spinal surgeons and encourage multidisciplinary discussion.

Another consideration for our survey was the potential for nuances in radiological interpretation and classification of fracture types to act as confounders of variations in treatment strategy. Fortunately, Schroeder et al. already demonstrated that the interpretation of A3 and A4 fractures, as incomplete and complete burst fractures in the thoracolumbar spine, is not affected by region or experience.³⁸ However, this has yet to be definitively shown for the subaxial cervical spine. Our didactic survey circumvented this potential for radiological bias by evaluating preferences for surgical or nonoperative management with predefined incomplete and complete subaxial fractures.

A major strength of our study was the global nature of our survey, spanning six distinct geographic regions. Participants had varying levels of experience, backgrounds, and specialties. We also assessed clinician surgical strategy directly with questions as well as indirectly with several clinical vignettes. The fact that our study eliminated radiological interpretation of fracture subtype as a potential confounder of management preference was also an advantage. However, our study was not without limitations. Rather than being based on prospective randomized clinical data, our conclusions were drawn from international clinician opinions. Although we achieved statistical significance for our primary and secondary outcomes, only 57% of addressed participants responded and the majority of our participants were from academic spine centers. This may lend a degree of confidence that we gathered data from involved experts working in leading tertiary institutions, but this may also mean that the results carry less external validity given the potential for volunteer bias. As with any survey, there is also a potential for nonresponder bias. However, we attempted to counteract this by using a simple random sampling scheme. Our subgroup analysis was also limited by the fact that some geographic areas were underrepresented, such as Asia and North America, and therefore had to be combined with their nearest neighboring geographic region. It is evident that there is still a need for large high-quality prospective trials to elucidate the optimal management strategy for fractures across the subaxial cervical spine.

As Joaquim et al. and Cruz et al. previously posited, accurate decision-making guided by an algorithm may not only lead to patients undergoing operative intervention in a timely fashion, but also decrease the number of patients who undergo an operation, and are therefore exposed to its associated risks, that may not necessarily be indicated.^{18,39,40} Our international survey is the first to encapsulate the current management preferences for incomplete and complete burst fractures of the subaxial cervical spine. This is especially important given the current dearth of clinical patient data relating to patient outcomes after these potentially devastating neurological injuries.

Conclusions

The subaxial cervical spine should not be considered

a single unified entity. Fractures of both the A3 and A4 subtypes were more likely to be surgically managed if they occurred at the cervicothoracic junction compared with those at the upper or middle subaxial regions. There was significant management variation between A3 and A4 injuries across the subaxial cervical spine, with surgeons displaying a greater preponderance to operatively manage the latter fracture morphology subtype. These findings warrant further investigation in multicenter randomized trials prior to incorporation into future algorithms for the treatment of subaxial cervical spine trauma.

Acknowledgments

The authors would like to thank Christian Knoll (AO Innovation Translation Center, Clinical Science) for his support with statistical analysis.

Appendix

AO Spine Subaxial Injury Classification System Validation Group Members

Andrey Grin, MD,¹ Ahmed Shawky Abdelgawaad, MD,² Akbar Jaleel Zubairi, FCOS Ortho,³ Alejandro Castillo, MD,⁴ Alejo Vernengo Lezica, MD,⁵ Alessandro Ramieri, MD, PhD,⁶ Alfredo Guiroy, MD,⁷ Alon Grundshtein, MD,⁸ Amauri Godinho Jr., MD,⁹ Amin Henine, MD,¹⁰ Andrei A. Pershin, MD, PhD,¹¹ Alkinoos Athanasiou, MD, PhD,¹² Baron Zarate-Kalfopulos, MD,¹³ Sofien Benzarti, MD,¹⁴ Claudio Bernucci, MD,¹⁵ Brandon J. Rebholz, MD, FAAOS,¹⁶ Bruno Direito-Santos, MS, MSc, FEBOT,¹⁷ Bruno Lourenço Costa, MD, MSc,¹⁸ Bruno Saciloto, MD,¹⁹ Catalin Majer, MD, PhD,²⁰ Chadi Tannoury, MD, FAOA, FAAOS,²¹ Christina Cheng, MD,²² Jason Pui Yin Cheung, MD,²³ Christian Konrads, MD,²⁴ Chumpon Jetjumnong, MD,²⁵ Chun Kee Chung, MD, PhD,²⁶ Eugen Cezar Popescu, MD, PhD,²⁷ Cumhur Kiliñer, MD, PhD,²⁸ Colin B. Harrism, MD, FAAOS,²⁹ Craig D. Steiner, MD,³⁰ Cristina Iguialada, MD,³¹ Darko Perovic, MD, PhD,³² David Ruiz Picazo, MD,³³ Luis David Orosco Falcone, MD,³⁴ Dilip Gopalakrishnan, MS,³⁵ Desai Ankit, MBBS, D.Ortho, DNB (Ortho),³⁶ Devi Prakash Tokala, FRCS (T&O),³⁷ Balgopal Karmacharya, FCPS,³⁸ Raphael Lotan, MD, MHA,³⁹ Mahmoud Shoab, MSc,⁴⁰ Salvatore Russo, FRCS (NS),⁴¹ Arun Kumar Viswanadha, MS, FACS,⁴² Bhavuk Garg, MS (Ortho),⁴³ Noe Dimas Uribe, CMOT,⁴⁴ Fabricio Medina, MD,⁴⁵ Jayakumar Subbiah, DNB (Ortho),⁴⁶ Wael Alsammak, MD,⁴⁷ Valentine Mandizvidza, FCS-ECSA (Ortho),⁴⁸ Ahmad Arief Atan, MD,⁴⁹ Rathinavelu Barani, MS (Ortho), MRCS (Ed),⁵⁰ Hugo Vilchis Sámano, MD,⁵¹ Emilija Stojkowska Pemovska, MD,⁵² Fabian Catarino Lopez Hinojosa, MD,⁵³ Taolin Fang, MD, PhD,⁵⁴ Federico Landriel, MD,⁵⁵ Federico Daniel Sartor, PhD,⁵⁶ Marcus Vinicius De Oliveira Ferreira, MD,⁵⁷ Vito Fiorenza, MD,⁵⁸ Francisco Alberto Mannara, MD,⁵⁹ Seibert Franz, Prof. Dr. Mag.,⁶⁰ Brett A. Freedman, MD,⁶¹ Samuel Arsenio M. Grozman, MD, FPOA, FPCS,⁶² Guillermo Espinosa, MD,⁶³ Guillermo Alejandro Ricciardi, MD,⁶⁴ Gunaseelan Ponnusamy, MS (Ortho) UKM,⁶⁵ Hassane Ali Amadou, MD,⁶⁶ Itati Romero, MD,⁶⁷ Joost Rutgers, MD, PhD,⁶⁸ James Harrop, MD, MSHQS,⁶⁹ Jose-Carlos Sauri-Barraza, MD,⁷⁰ Jeevan Kumar Sharma, MBBS, MS (Ortho), FASSI,⁷¹ Jose Joefrey F. Arbatin Jr., FPOA,⁷² Jeronimo B. Milano, MD, PhD,⁷³ Jibin Joseph Francis, (SA) FRCS (SN),⁷⁴ John Chen Li Tat, MB BCh (NUI), BAO, LRCSI, FRCS (Ed),⁷⁵ Joachim Vahl, MD,⁷⁶ Jose Alfredo Corredor, MD,⁷⁷ João Moreno Morais, MD,⁷⁸ Joana Guasque, MD,⁷⁹ John Koerner, MD,⁸⁰ Duerinck Johnny, MD, PhD,⁸¹ Jose Rafael Perozo Ron, MD,⁸² Juan Delgado-Fernandez, MD,⁸³ Juan Esteban Muñoz Montoya,⁸⁴ Juan Lourido, MD,⁸⁵ Ariel Kaen, PhD,⁸⁶ Kubilay Murat Özdener, MD,⁸⁷ Konstantinos Margetis, MD, PhD,⁸⁸ Konstantinos Paterakis,

- MD,⁸⁹ Lady Lozano Cari, MD,⁹⁰ Lingjie Fu, MD, PhD,⁹¹ Ahmed Dawoud, MD,⁹² Luis Muñiz Luna, MD,⁹³ Mahmoud Alkhasawi, PhD,⁹⁴ Maximo-Alberto Diez-Ulloa, MD,⁹⁵ Maria A. García-Pallero, MD,⁹⁶ Mauro Pluderi, MD, PhD,⁹⁷ Marcelo Gruenberg, MD,⁹⁸ Marcelo Valacco, MD,⁹⁹ Mario Ganau, MD, PhD, MBA, FEBNS,¹⁰⁰ Martin M. Estefan, MD,¹⁰¹ Luis Miguel Duchén Rodríguez, MD,¹⁰² Naohisa Miyakoshi, MD, PhD,¹⁰³ Mahmoud Elshamly, MD, PhD,¹⁰⁴ Mohamed Fawzy Khattab, MD, PhD,¹⁰⁵ Sean R. Smith, MD,¹⁰⁶ Mbarak Abeid, MD,¹⁰⁷ Ignacio Garfinkel, MD,¹⁰⁸ Nicola Nicassio, MD,¹⁰⁹ Nuno Neves, PhD,¹¹⁰ Olga Carolina Morillo Acosta, MD,¹¹¹ Pedro Luis Bazán, MD,¹¹² Paulo Pereira, MD, PhD,¹¹³ Phedy Lim, MD,¹¹⁴ Patrick R. Pritchard, MD,¹¹⁵ Pragnesh Bhatt, MS, MCh, FRCS, FEBNS,¹¹⁶ Raghuraj Kundangar, MS (Ortho),¹¹⁷ Rian Souza Vieira, MD,¹¹⁸ Ricardo Rodrigues-Pinto, MD, PhD,¹¹⁹ Ripul R. Panchal, DO, FACOS, FACS,¹²⁰ Rafael Lombart-Blanco, MD, PhD,¹²¹ Ronald Alberto Rioja Rosas, MD,¹²² Rui Manilha, MD,¹²³ Ratko Yurac, MD,¹²⁴ Sara Diniz, MD,¹²⁵ Scott C. Wagner, MD,¹²⁶ Segundo Fuego, MD,¹²⁷ Selvaraj Ramakrishnan, MD,¹²⁸ Serdar Demiröz, MD,¹²⁹ Shafiq Hackla, MBBS, MS (Ortho), DNB (Ortho),¹³⁰ Babak Shariati, FRCS,¹³¹ Mohammad El-Sharkawi, MD, PhD,¹³² Yasunori Sorimachi, MD, DMSc, PhD,¹³³ Stipe Corluka, MD,¹³⁴ Sung-Joo Yuh, MD,¹³⁵ Thami Benzakour, MD,¹³⁶ Tarek ElHewala, MD, PhD,¹³⁷ Tarun Suri, MS, FNB (Spine surgery),¹³⁸ Derek T. Cawley, MMSc, MCh, FRCS,¹³⁹ Adetunji Toluse, MD, FWACS, FMCOrtho,¹⁴⁰ Cristian Valdez, MD,¹⁴¹ Waheed Abdul, MD,¹⁴² Waqar Hassan, MD,¹⁴³ Yohan Robinson, MD, PhD, MBA,¹⁴⁴ Zachary L. Hickman, MD, FAANS,¹⁴⁵ Mohamad Zaki Haji Mohd Amin, MS Ortho,¹⁴⁶ Oscar González Guerra, MD,¹⁴⁷ and Zdenek Klezl, MD, PhD.¹⁴⁸
- ¹The Division of Emergency Neurosurgery in Sklifosovskiy Research Institute of Emergency Medicine, Moscow, Russia. ²Helios Klinikum Erfurt, Erfurt, Germany. ³The Aga Khan University, Karachi City, Sindh, Pakistan. ⁴Hospital Nacional Alberto Sabogal, Lima, Peru. ⁵San Isidro Hospital, Buenos Aires, Argentina. ⁶SAIMLAL Department, La Sapienza University, Rome, Italy. ⁷Spine Surgery, Orthopedic Department, Spanish Hospital, Mendoza, Argentina. ⁸The Spinal Surgery Unit, Oxford University Hospital NHS Foundation Trust, Oxford, United Kingdom. ⁹State Health Secretary–Federal District, Brasilia, Brazil. ¹⁰C.O.A. Department University Hospital Center of Douera, Algiers, Algeria. ¹¹Albrecht Federal Scientific Centre of Rehabilitation of the Disabled, St. Petersburg, Russian Federation. ¹²Aristotle University of Thessaloniki, School of Medicine, Serres, Greece. ¹³Instituto Nacional de Rehabilitación, Mexico City, Mexico. ¹⁴Orthopedic Department, Sahloul University Hospital, Sousse, Tunisia. ¹⁵Neurosurgery Department, ASST Papa Giovanni XXIII Hospital, Bergamo, Italy. ¹⁶Medical College of Wisconsin, Milwaukee, WI. ¹⁷Hospital de Braga, Braga, Portugal. ¹⁸Centro Hospitalar Universitário da Cova da Beira, Covilhã, Portugal. ¹⁹Hospital São Vicente de Paulo, Guarapuava, Brazil. ²⁰Neuro Spinal Hospital, Dubai, United Arab Emirates. ²¹Boston University Medical Center, Boston, MA. ²²University Hospitals Cleveland Medical Center, Cleveland, OH. ²³Department of Orthopedics and Traumatology, The University of Hong Kong, Hong Kong SAR, China. ²⁴Department for Trauma and Reconstructive Surgery, BG Klinik, University of Tübingen, Tübingen, Germany. ²⁵Department of Neurosurgery, Faculty of Medicine, Chiangmai University, Thailand. ²⁶Department of Neurosurgery, Seoul National University, Seoul, South Korea. ²⁷“Prof. Dr. N. Oblu” Emergency Hospital, Iasi, Romania. ²⁸Trakya University Faculty of Medicine, Edirne, Turkey. ²⁹Centers for Neurosurgery, Spine and Orthopedics, Rutgers–New Jersey Medical School, Wayne, NJ. ³⁰Orthopedic Center of South Florida, Plantation, FL. ³¹Hospital General Universitario Gregorio Marañón, Madrid, Spain. ³²Department for Traumatology and Orthopedic, Clinical Hospital Dubrava, Zagreb, Croatia. ³³Orthopedics Department, Complejo Hospitalario Universitario de Albacete, Albacete, Spain. ³⁴Sanatorio Allende, Córdoba, Argentina. ³⁵Apollo Hospitals Bangalore, Karnataka, India. ³⁶Hraia L.G. Rotary Hospital Vapi, Gujarat, India. ³⁷Grange University Hospital, Newport, United Kingdom. ³⁸Manipal Teaching Hospital, Pokhara, Nepal. ³⁹Tel Aviv University, Orthopedic Surgery Department, Wolfson Medical Center, Holon, Israel. ⁴⁰Neurosurgery, Tanta University, Egypt. ⁴¹Imperial College London, London, United Kingdom. ⁴²Department of Spine Surgery, Mallika Spine Centre, Guntur, AP, India. ⁴³Department of Orthopedics, All India Institute of Medical Sciences, New Delhi, India. ⁴⁴Estado de México University, Toluca de Lerdo, Mexico State, Mexico. ⁴⁵Hospital General Roca, Río Negro, Argentina. ⁴⁶Devadoss Multispeciality Hospital, Surveyor Colony, Madurai, Tamilnadu, India. ⁴⁷Rashid Hospital, Dubai, United Arab Emirates. ⁴⁸ZimSpine, Harare, Zimbabwe. ⁴⁹Department of Orthopedic, Hospital Tuanku Ja'afar Seremban, Negeri Sembilan, Malaysia. ⁵⁰Apollo Hospitals, Chennai, India. ⁵¹Hospital de Trauma y Ortopedia Lomas Verdes, Hospital Médica Sur, Mexico. ⁵²University Clinical Center, Department of Traumatology, Skopje, Macedonia. ⁵³Hospital Universitario Cajuru, Monterrey, Mexico. ⁵⁴Department of Neurology, NYU Grossman School of Medicine, New York, NY. ⁵⁵Hospital Italiano de Buenos Aires, Buenos Aires, Argentina. ⁵⁶Hospital General de Agudos: “Cosme Argerich” CABA, Buenos Aires, Argentina. ⁵⁷Orthopedics and Traumatology, Federal University of Juiz de Fora, Juiz de Fora, Brazil. ⁵⁸Neurosurgery Department, ARNAS Civico Di Cristina Benfratelli Hospital, Palermo, Italy. ⁵⁹Neurosurgery Department Fernández Hospital, School of Medicine, Universidad de Buenos Aires, Buenos Aires, Argentina. ⁶⁰Department for Orthopedics and Traumatology, Medical University Graz, Graz, Austria. ⁶¹Division of Spine Surgery, Mayo Clinic, Rochester, MN. ⁶²College of Medicine, University of the Philippines, Manila, Philippines. ⁶³Instituto Mexicano del Seguro Social, Cuauhtémoc, Mexico. ⁶⁴Centro Médico Integral Fitz Roy, Buenos Aires, Argentina. ⁶⁵Columbia Asia Hospital Tebrau Johor Bharu Malaysia, Hospital Sultanah Aminah, Johor Bharu, Malaysia. ⁶⁶Fez Teaching University Hospital, Fez, Morocco. ⁶⁷Hospital Zonal General de Agudos Dr. Ricardo Gutiérrez de La Plata, Buenos Aires, Argentina. ⁶⁸Erasmus MC/University Medical Center Rotterdam, Department of Orthopedic Surgery and Sport Medicine, Rotterdam, The Netherlands. ⁶⁹Departments of Neurological and Orthopedic Surgery, Thomas Jefferson University, Philadelphia, PA. ⁷⁰ABC Medical Center, Mexico City, Mexico. ⁷¹Indian Spinal Injuries Center, Vasantkunj, New Delhi, India. ⁷²Spine and Orthopedics Cebu, Cebu City, Philippines. ⁷³Neurological Institute of Curitiba, Parana, Curitiba, Brazil. ⁷⁴Addenbrooke's Hospital, Cambridge University Hospitals Foundation Trust, Cambridge, United Kingdom. ⁷⁵Department of Orthopedic Surgery, Singapore General Hospital, Singapore. ⁷⁶Klinikum Wels-Grieskirchen, Department of Trauma Surgery, Wels, Austria. ⁷⁷Clinica Palermo, Bogoty D.C., Colombia. ⁷⁸Centro Hospitalar Tondela, Viseu, Portugal. ⁷⁹Hospital Universitário Cajuru, Curitiba, Brazil. ⁸⁰Rothman Orthopedic Institute, Paramus, NJ, and Hackensack Meridian School of Medicine, Hackensack, NJ. ⁸¹Neurosurgery Department, UZ Brussel, Brussels, Belgium. ⁸²Hospital Las Higueras, Talcahuano, Chile. ⁸³12 de Octubre University Hospital, Madrid, Spain. ⁸⁴Clínica Alta Complejidad, Cesar, Colombia. ⁸⁵Hospital Parque, Santa Cruz de Tenerife, Spain. ⁸⁶Hospital Virgen del Rocío, Neurosurgery Department, Sevilla, Spain. ⁸⁷Özel Ankara Umüt Hastanesi, Ankara, Turkey. ⁸⁸Icahn School of Medicine at Mount Sinai, NY. ⁸⁹Faculty of Medicine, School of Health Sciences, University of Thessaly, Larissa, Greece. ⁹⁰Edgardo Rebagliati Martins National Hospital, Lima, Perú. ⁹¹Department of Orthopedic Surgery, Ninth People's Hospital of Shanghai Jiao Tong University School of Medicine, Shanghai, China. ⁹²Westbay Medicare Hospital, Doha, Qatar. ⁹³“Lomas Verdes” Traumatology and Orthopedic Hospital, Nacozari de García, Mexico. ⁹⁴Faculty of Medicine, Tanta University, Tanta, Egypt. ⁹⁵Universitary Hospitalary Complex Santiago de Compostela, University of Santiago de Compostela,

- Galicia, Spain. ⁹⁶Department of Neurosurgery, University Central Hospital of Asturias, Asturias, Spain. ⁹⁷Neurosurgery Unit, Fondazione IRCCS Ca' Granda Ospedale Maggiore Policlinico Milano, Milan, Italy. ⁹⁸Hospital Italiano, Caba, Argentina. ⁹⁹Orthopedic Department, Hospital Churruca Visca, Buenos Aires, Argentina. ¹⁰⁰Department of Neurosurgery, Oxford University Hospitals NHS Foundation Trust, Oxford, United Kingdom. ¹⁰¹Nottingham University Hospitals NHS, Nottingham, United Kingdom. ¹⁰²Neurological Diseases Center, Public University of El Alto, La Paz, Bolivia. ¹⁰³Department of Orthopedic Surgery, Akita University Graduate School of Medicine, Akita, Japan. ¹⁰⁴Austrian Spine and Orthopedics Center, Vienna, Austria. ¹⁰⁵Ain Shams University, Cairo, Egypt. ¹⁰⁶The Queen Elizabeth Hospital, St. Michael, Barbados. ¹⁰⁷Moi County Hospital, Mombasa, Kenya. ¹⁰⁸Hospital Alvarez Teodoro, Buenos Aires, Argentina. ¹⁰⁹Ospedale Bufalini–Cesena, Cesena, Italy. ¹¹⁰Orthopedic Department, Centro Hospitalar e Universitário de São João, Porto, Portugal. ¹¹¹Department of Orthopedic Surgery, Postgrado de Cirugía de Columna, Hospital Universitario Maturin, Monagas, Venezuela. ¹¹²Hospital Italiano La Plata, Buenos Aires, Argentina. ¹¹³Centro Hospitalar Universitário São João, Faculty of Medicine of the University of Porto, Porto, Portugal. ¹¹⁴Rumah Sakit Umum Pusat Fatmawati, South Jakarta, Indonesia. ¹¹⁵Department of Neurosurgery, University of Alabama at Birmingham, Birmingham, AL. ¹¹⁶Department of Neurosurgery, University of Aberdeen, Aberdeen, Scotland, United Kingdom. ¹¹⁷Department of Orthopedics, Kasturba Medical College and Hospital, Manipal, India. ¹¹⁸Ortopedia e Traumatologia, Cururgia da Coluna Vertebral, Centro, Ribeirão Preto, SP, Brazil. ¹¹⁹Spinal Unit/Unidade Vertebro-Medular, Department of Orthopedics, Centro Hospitalar Universitario do Porto, Porto, Portugal. ¹²⁰American Neurospine Institute, Plano, TX. ¹²¹Clinica Universidad de Navarra, Pamplona, Spain. ¹²²Santa Casa de Itapeva, São Paulo, Brazil. ¹²³Hospital Gracia de Orta, Almada, Portugal. ¹²⁴University del Desarrollo (UDD), Clinica Alemana de Santiago, Vitacura, Región Metropolitana, Chile. ¹²⁵Department of Orthopedics, Centro Hospitalar Universitario do Porto, Porto, Portugal. ¹²⁶Department of Orthopedics, Walter Reed National Military Medical Center, Bethesda, MD. ¹²⁷Hospital Santa Isabel de Hungría de Mendoza, Medoza, Argentina. ¹²⁸Apollo Specialty Hospital, Chennai, India. ¹²⁹Department of Orthopedic and Traumatology, Medical Park Hospital, Gebze, Kocaeli, Turkey. ¹³⁰Artemis Hospital Gurgaon, Haryana, India. ¹³¹Buckinghamshire Healthcare NHS Trust, Amersham, United Kingdom. ¹³²Orthopedic and Trauma Surgery Department, Faculty of Medicine, Assiut University, Assiut, Egypt. ¹³³Division of Spine Surgery, Department of Orthopedic Surgery, Japanese Red Cross Maebashi Hospital, Tokyo, Japan. ¹³⁴University Hospital Centre Sestre milosrdnice, Zagreb, Croatia. ¹³⁵Division of Neurosurgery, The Centre hospitalier de l'Université de Montréal, Montreal, QC, Canada. ¹³⁶Zerktouni Ortho Clinic, Casablanca, Morocco. ¹³⁷Faculty of Medicine, Zagazig University, Zagazig, Egypt. ¹³⁸Maulana Azad Medical College, New Delhi, India. ¹³⁹Mater Private Hospital, Dublin, Ireland. ¹⁴⁰National Orthopedic Hospital, Lagos, Nigeria. ¹⁴¹Neurosurgery, Santiago de Chile, Chile. ¹⁴²Rehman Medical Institute, Hayatabad Peshawar, KP, Pakistan. ¹⁴³Lady Reading Hospital Peshawar, Khyber Pakhthoon Khwa, Pakistan. ¹⁴⁴Gothenburg University, Institute of Clinical Sciences, Gothenburg, Sweden. ¹⁴⁵NYC Health + Hospitals/Elmhurst, Icahn School of Medicine, Mount Sinai, NY. ¹⁴⁶Universiti Malaysia, Sarawak, Malaysia. ¹⁴⁷Hospital Dr. Víctor Ríos Ruiz, Los Angeles, Bío Bío, Chile. ¹⁴⁸Spine Surgery Department, University Hospital Motol, Praha, Czech Republic.
- Aebi M. Surgical treatment of upper, middle and lower cervical injuries and non-unions by anterior procedures. *Eur Spine J.* 2010;19(1)(suppl 1):S33–S39.
 - Torretti JA, Sengupta DK. Cervical spine trauma. *Indian J Orthop.* 2007;41(4):255–267.
 - Vaccaro AR, Hulbert RJ, Patel AA, et al. The subaxial cervical spine injury classification system: a novel approach to recognize the importance of morphology, neurology, and integrity of the disco-ligamentous complex. *Spine (Phila Pa 1976).* 2007;32(21):2365–2374.
 - Harris JH Jr, Edeiken-Monroe B, Kopaniky DR. A practical classification of acute cervical spine injuries. *Orthop Clin North Am.* 1986;17(1):15–30.
 - Allen BL Jr, Ferguson RL, Lehmann TR, O'Brien RP. A mechanistic classification of closed, indirect fractures and dislocations of the lower cervical spine. *Spine (Phila Pa 1976).* 1982;7(1):1–27.
 - Glaser JA, Jaworski BA, Cuddy BG, et al. Variation in surgical opinion regarding management of selected cervical spine injuries. A preliminary study. *Spine (Phila Pa 1976).* 1998; 23(9):975–983.
 - Vaccaro AR, Koerner JD, Radcliff KE, et al. AOSpine subaxial cervical spine injury classification system. *Eur Spine J.* 2016;25(7):2173–2184.
 - Dvorak MF, Fisher CG, Fehlings MG, et al. The surgical approach to subaxial cervical spine injuries: an evidence-based algorithm based on the SLIC classification system. *Spine (Phila Pa 1976).* 2007;32(23):2620–2629.
 - Wang PG, Patel AA, Vaccaro AR. The development and evaluation of the subaxial injury classification scoring system for cervical spine trauma. *Clin Orthop Relat Res.* 2011; 469(3):723–731.
 - AO Spine. AO Spine Injury Classification Systems. Accessed April 26, 2021. www.aospine.org/classification
 - Mayhew D, Mendonca V, Murthy BVS. A review of ASA physical status—historical perspectives and modern developments. *Anaesthesia.* 2019;74(3):373–379.
 - Leucht P, Fischer K, Muhr G, Mueller EJ. Epidemiology of traumatic spine fractures. *Injury.* 2009;40(2):166–172.
 - Feuchtbaum E, Buchowski J, Zebala L. Subaxial cervical spine trauma. *Curr Rev Musculoskelet Med.* 2016;9(4): 496–504.
 - Miller CP, Golinvaux NS, Brubacher JW, et al. Mortality rates associated with odontoid and subaxial cervical spine fractures. *Am J Orthop.* 2015;44(6):E173–E179.
 - Sokolowski MJ, Jackson AP, Haak MH, et al. Acute mortality and complications of cervical spine injuries in the elderly at a single tertiary care center. *J Spinal Disord Tech.* 2007;20(5): 352–356.
 - Urrutia J, Zamora T, Campos M, et al. A comparative agreement evaluation of two subaxial cervical spine injury classification systems: the AOSpine and the Allen and Ferguson schemes. *Eur Spine J.* 2016;25(7):2185–2192.
 - Silva OT, Sabba MF, Lira HIG, et al. Evaluation of the reliability and validity of the newer AOSpine subaxial cervical injury classification (C-3 to C-7). *J Neurosurg Spine.* 2016; 25(3):303–308.
 - Hitti FL, McShane BJ, Yang AI, et al. Predictors of failure of nonoperative management following subaxial spine trauma and creation of modified subaxial injury classification system. *World Neurosurg.* 2019;122:e1359–e1364.
 - van Middendorp JJ, Audigé L, Hanson B, et al. What should an ideal spinal injury classification system consist of? A methodological review and conceptual proposal for future classifications. *Eur Spine J.* 2010;19(8):1238–1249.
 - Koivikko MP, Myllynen P, Karjalainen M, et al. Conservative and operative treatment in cervical burst fractures. *Arch Orthop Trauma Surg.* 2000;120(7-8):448–451.
 - Steinmetz MP, Miller J, Warbel A, et al. Regional instabil-

References

- ity following cervicothoracic junction surgery. *J Neurosurg Spine*. 2006;4(4):278–284.
23. Yu Y, Li JS, Guo T, et al. Normal intervertebral segment rotation of the subaxial cervical spine: an *in vivo* study of dynamic neck motions. *J Orthop Translat*. 2019;18:32–39.
 24. Fredø HL, Rizvi SAM, Lied B, et al. The epidemiology of traumatic cervical spine fractures: a prospective population study from Norway. *Scand J Trauma Resusc Emerg Med*. 2012;20(1):85.
 25. Kwon BK, Vaccaro AR, Grauer JN, et al. Subaxial cervical spine trauma. *J Am Acad Orthop Surg*. 2006;14(2):78–89.
 26. Quarrington RD, Jones CF, Tcherveniakov P, et al. Traumatic subaxial cervical facet subluxation and dislocation: epidemiology, radiographic analyses, and risk factors for spinal cord injury. *Spine J*. 2018;18(3):387–398.
 27. Schleicher P, Kobbe P, Kandziora F, et al. Treatment of injuries to the subaxial cervical spine: recommendations of the spine section of the German Society for Orthopaedics and Trauma (DGOU). *Global Spine J*. 2018;8(2)(suppl):25S–33S.
 28. Toh E, Nomura T, Watanabe M, Mochida J. Surgical treatment for injuries of the middle and lower cervical spine. *Int Orthop*. 2006;30(1):54–58.
 29. Fisher CG, Dvorak MF, Leith J, Wing PC. Comparison of outcomes for unstable lower cervical flexion teardrop fractures managed with halo thoracic vest versus anterior corpectomy and plating. *Spine (Phila Pa 1976)*. 2002;27(2):160–166.
 30. Song KJ, Lee SK, Ham DH, et al. Limitation of previous A1-len classification and subaxial cervical spine injury classification (SLIC) system in distractive-extension injury of cervical spine: proposal of modified classification system. *Eur Spine J*. 2016;25(1):74–79.
 31. Divi SN, Schroeder GD, Oner FC, et al. AOSpine-Spine Trauma Classification system: the value of modifiers: a narrative review with commentary on evolving descriptive principles. *Global Spine J*. 2019;9(1)(suppl):77S–88S.
 32. Schleicher P, Pingel A, Kandziora F. Safe management of acute cervical spine injuries. *EFORT Open Rev*. 2018;3(5):347–357.
 33. Fisher CG, Schouten R, Versteeg AL, et al. Reliability of the Spinal Instability Neoplastic Score (SINS) among radiation oncologists: an assessment of instability secondary to spinal metastases. *Radiat Oncol*. 2014;9(1):69.
 34. Sokolowski MJ, Jackson AP, Haak MH, et al. Acute outcomes of cervical spine injuries in the elderly: atlantaxial vs subaxial injuries. *J Spinal Cord Med*. 2007;30(3):238–242.
 35. Lenoir T, Hoffmann E, Thevenin-Lemoine C, et al. Neurological and functional outcome after unstable cervicothoracic junction injury treated by posterior reduction and synthesis. *Spine J*. 2006;6(5):507–513.
 36. Satkunasivam R, Klaassen Z, Ravi B, et al. Relation between surgeon age and postoperative outcomes: a population-based cohort study. *CMAJ*. 2020;192(15):E385–E392.
 37. Daniels A, Ames CP, Smith JS, Hart RA. Variability in spine surgery procedures performed during orthopedic and neurological surgery residency training: an analysis of ACGME case log data. *Spine J*. 2014;14(11):S111–S112.
 38. Schroeder GD, Kepler CK, Koerner JD, et al. Is there a regional difference in morphology interpretation of A3 and A4 fractures among different cultures? *J Neurosurg Spine*. 2016;24(2):332–339.
 39. Joaquim AF, Patel AA. Subaxial cervical spine trauma: evaluation and surgical decision-making. *Global Spine J*. 2014;4(1):63–70.
 40. Cruz HY, Joaquim AF, Tedeschi H, Patel AA. Evaluation of the SLICS use in the treatment of subaxial cervical spine injuries. *Arq Neuropsiquiatr*. 2015;73(5):445–449.

Disclosures

This study was organized and funded by AO Spine through AO Spine Knowledge Forum Trauma, a focused group of international trauma experts. AO Spine is a clinical division of the AO Foundation, which is an independent, medically guided, not-for-profit organization. Study support was provided directly through the AO Spine Research Department. Dr. Schnake receives honoraria from AO Spine International. Dr. Schroeder is a consultant for Medtronic, Stryker, Zimmer, Bioventus, AO Spine, ISD, WK, and Teledoc. Dr. Vaccaro owns stock in Advanced Spinal Intellectual Properties, Atlas Spine, Avaz Surgical, Bonovo Orthopaedics, Cytonics, Deep Health, Dimension Orthotics LLC, Electrocore, Flagship Surgical, FlowPharma, Globus, Innovative Surgical Design, Insight Therapeutics, Jushi, NuVasive, Orthobullets, Paradigm Spine, Parvizi Surgical Innovation, Progressive Spinal Technologies, Replication Medica, Spine Medica, Spinology, Stout Medical, Vertiflex, and ViewFi Health; receives royalties from Aesculap, Atlas Spine, Globus, Medtronic, SpineWave, and Stryker Spine; and works as an independent contractor for AO Spine.

Author Contributions

Conception and design: Tee, Kweh, Muijs, Schroeder, Vaccaro. Acquisition of data: Tee, Kweh, Schroeder, Vaccaro. Analysis and interpretation of data: Tee, Kweh. Drafting the article: Tee, Kweh. Critically revising the article: all authors. Reviewed submitted version of manuscript: Tee, Kweh. Approved the final version of the manuscript on behalf of all authors: Tee. Statistical analysis: Tee, Kweh. Administrative/technical/material support: Tee, Kweh.

Supplemental Information

Online-Only Content

Supplemental material is available with the online version of the article.

Supplementary Tables 1–4. <https://thejns.org/doi/suppl/10.3171/2021.3.SPINE201997>.

Correspondence

Jin Wee Tee: National Trauma Research Institute, Melbourne, Victoria, Australia. jtee.neurosurgery@gmail.com.